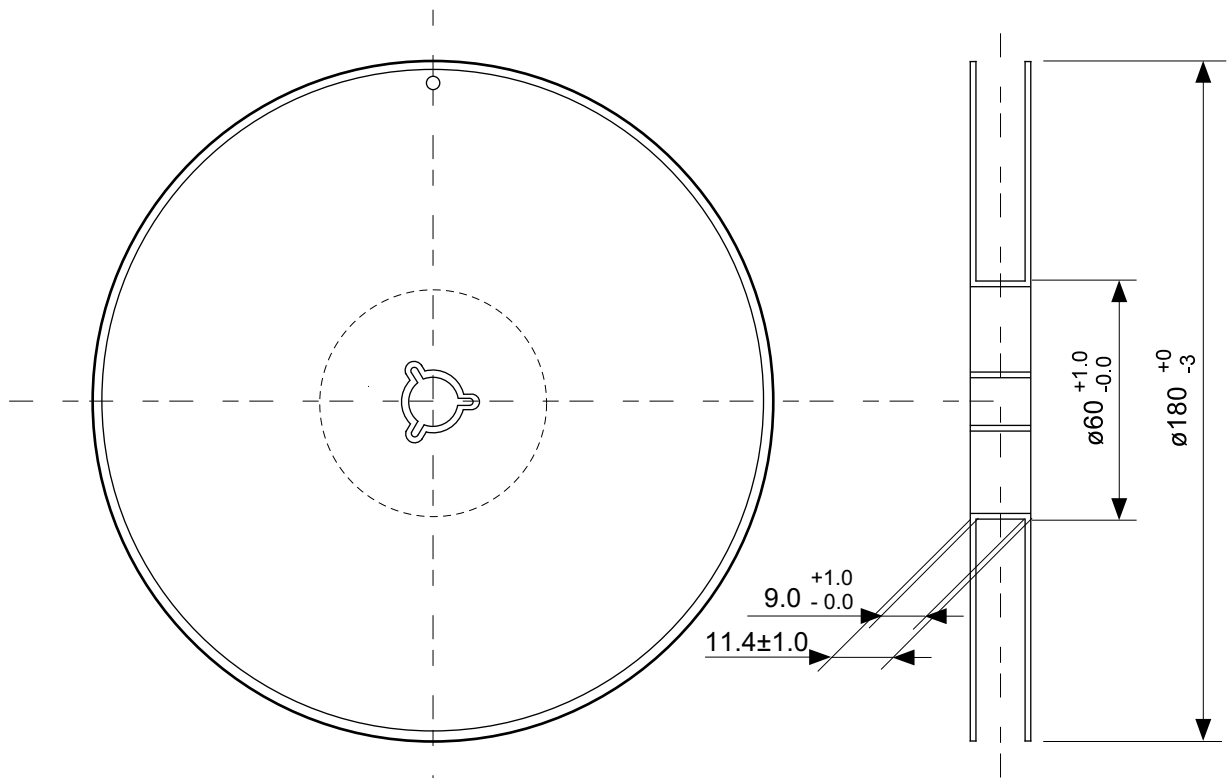


※ The heat sink of back side has different electric potential depending on the product.
 Confirm specifications of each product.
 Do not use it as the function of electrode.

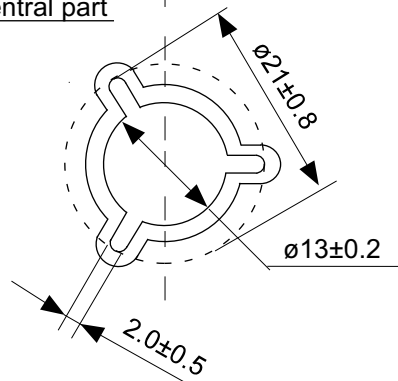
No. PX006-A-P-SD-1.0

| | |
|-------|------------------------|
| TITLE | DFN-6-B-PKG Dimensions |
| No. | PX006-A-P-SD-1.0 |
| ANGLE | |
| UNIT | mm |
| | |

ABLIC Inc.

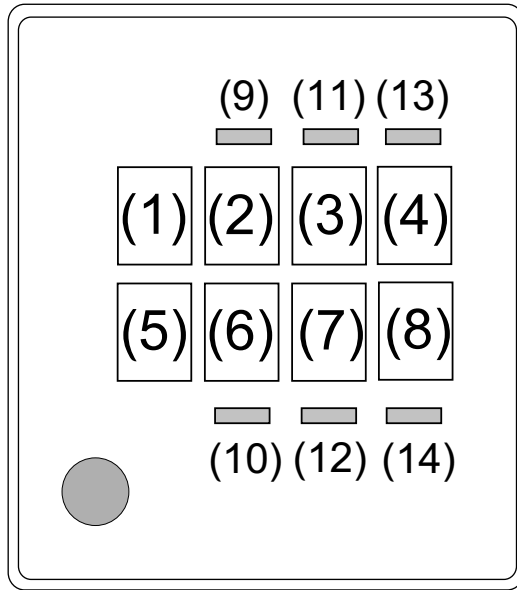


Enlarged drawing in the central part



No. PX006-A-R-SD-1.0

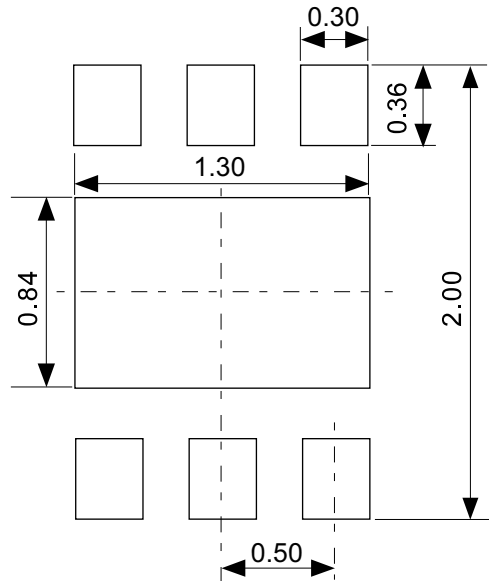
| | | | |
|-------------------|------------------|------|-------|
| TITLE | DFN-6-B-Reel | | |
| No. | PX006-A-R-SD-1.0 | | |
| ANGLE | | QTY. | 5,000 |
| UNIT | mm | | |
| | | | |
| ABLIC Inc. | | | |



- (1) to (4) : Product code
- (5) : Assembly code
- (6) to (8) : Lot No.
- (9) , (10) : Year of assembly (bar)
- (11) to (14) : Month of assembly (bar)
- : 1 Pin mark

No. PX006-A-M-SD-1.0

| | | | |
|-------------------|-------------------|------|-------|
| TITLE | DFN-6-B- Markings | | |
| No. | PX006-A-M-SD-1.0 | | |
| ANGLE | | | |
| UNIT | | TYPE | LASER |
| | | | |
| ABLIC Inc. | | | |



Caution It is recommended to solder the heat sink to a board in order to ensure the heat radiation.

注意 放熱性を確保する為に、PKGの裏面放熱板(ヒートシンク)を基板に半田付けする事を推奨いたします。

No. PX006-A-L-SD-1.0

| | |
|-------------------|---------------------------------|
| TITLE | DFN-6-B -Land Recommendation |
| No. | PX006-A-L-SD-1.0 |
| ANGLE | |
| UNIT | mm |
| | |
| ABLIC Inc. | |