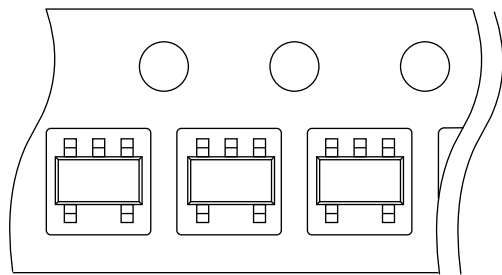
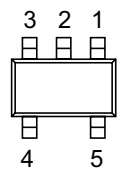
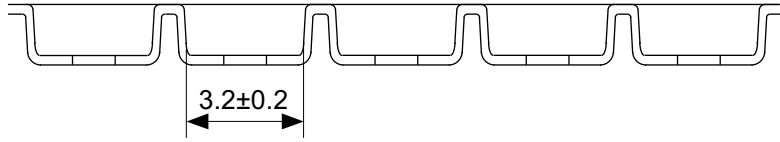
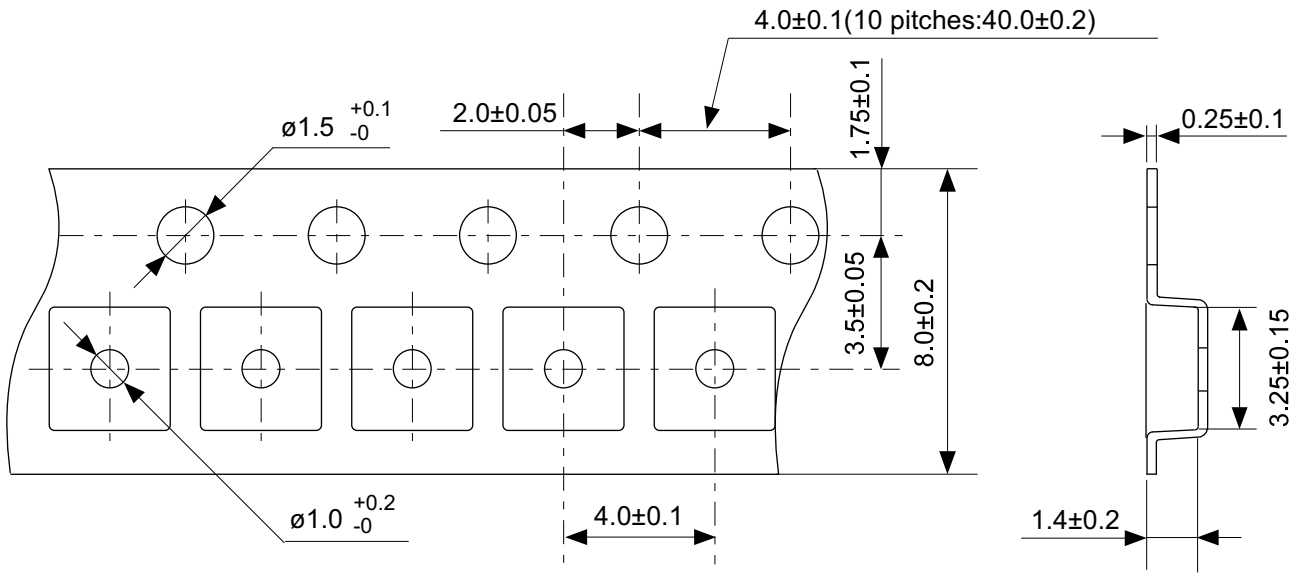


No. MP005-A-P-SD-1.3

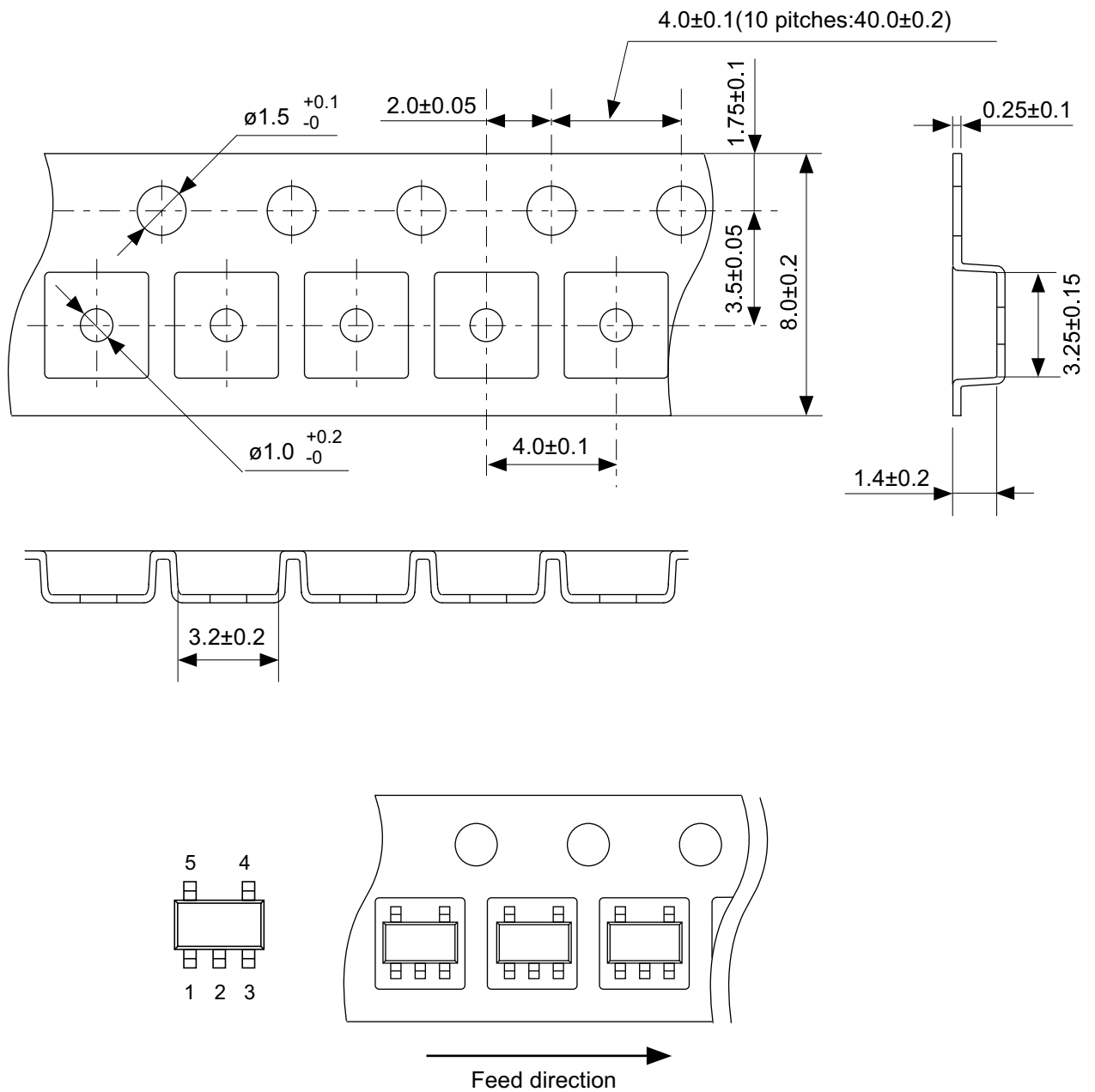
TITLE	SOT235-A-PKG Dimensions
No.	MP005-A-P-SD-1.3
ANGLE	
UNIT	mm
ABLIC Inc.	



→
Feed direction

No. MP005-A-C-SD-2.1

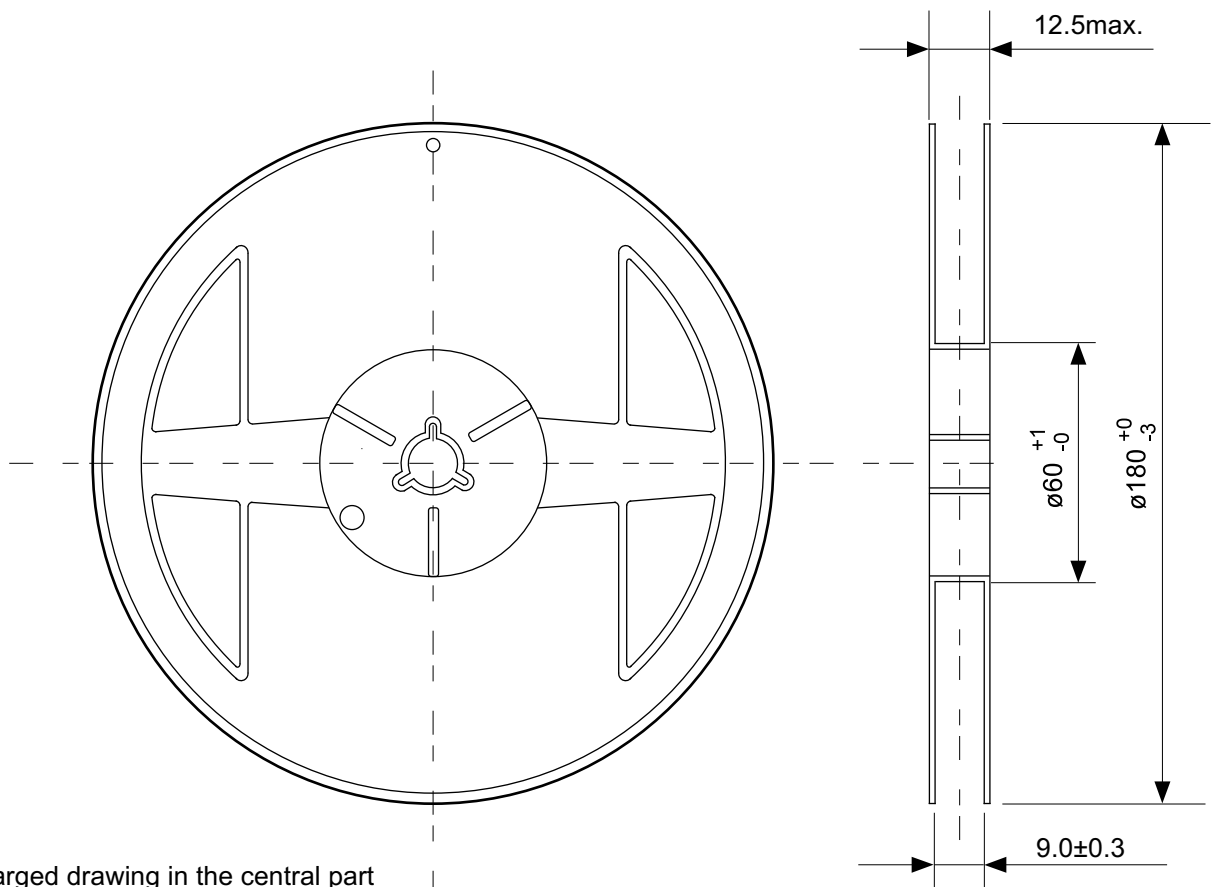
TITLE	SOT235-A-Carrier Tape
No.	MP005-A-C-SD-2.1
ANGLE	
UNIT	mm
ABLIC Inc.	



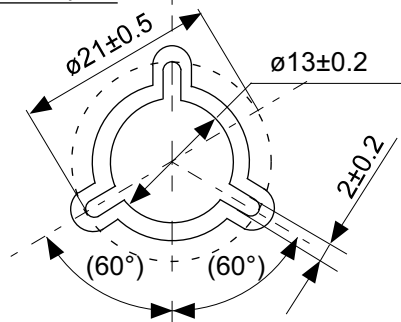
No. MP005-A-C-S1-2.1

TITLE	SOT235-A-Carrier Tape
No.	MP005-A-C-S1-2.1
ANGLE	
UNIT	mm
ABLIC Inc.	

The information herein is subject to change without notice.

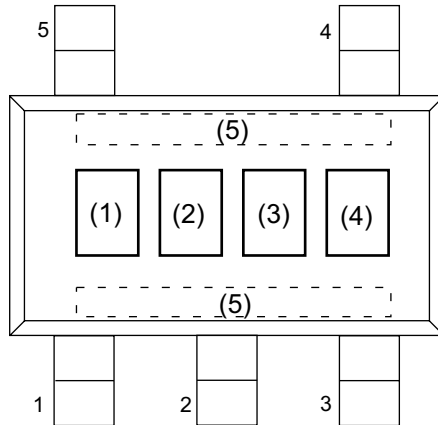


Enlarged drawing in the central part



No. MP005-A-R-SD-1.1

TITLE	SOT235-A-Reel		
No.	MP005-A-R-SD-1.1		
ANGLE		QTY.	3,000
UNIT	mm		
ABLIC Inc.			



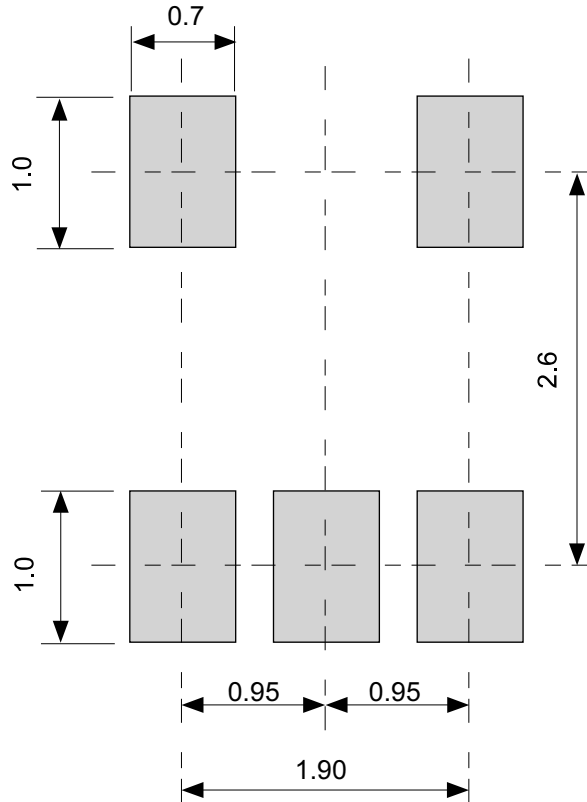
(1) to (3) : Product code

(4) : Month of assembly

(5) : Dot on one side (Year and week of assembly)

No. MP005-A-M-S1-1.1

TITLE	SOT235-A-Markings		
No.	MP005-A-M-S1-1.1		
ANGLE			
UNIT		TYPE	LASER
ABLIC Inc.			



No. MP005-A-L-SD-2.0

TITLE	SOT235-A -Land Recommendation
No.	MP005-A-L-SD-2.0
ANGLE	
UNIT	mm
ABLIC Inc.	