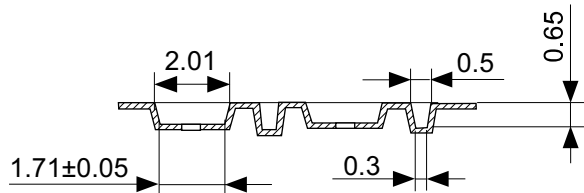
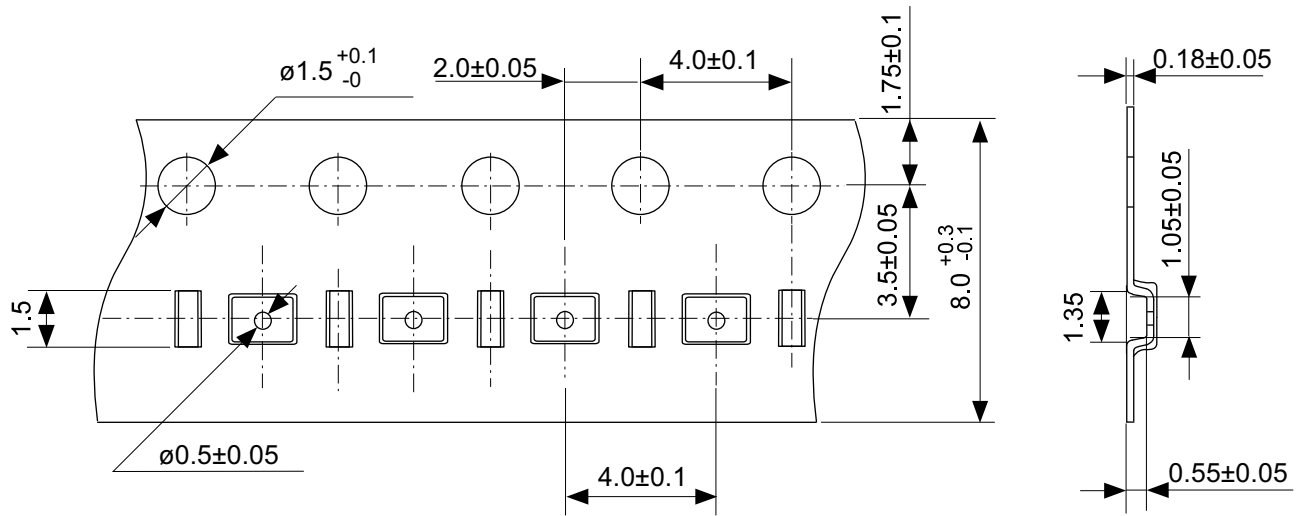



Pin No.	Symbol
A1	SDA
B1	GND
C1	A2
A2	SCL
B2	WP
C2	VCC

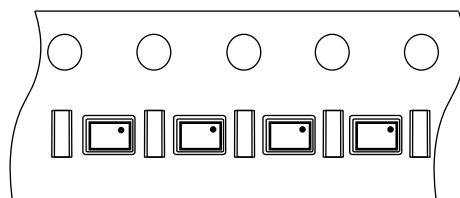
No. HJ006-C-P-SD-2.0

TITLE	WLP-6J-C-PKG Dimensions (S-24C16C)
No.	HJ006-C-P-SD-2.0
ANGLE	
UNIT	mm

**ABLIC Inc.**



C1 A1  
  
 C2 A2



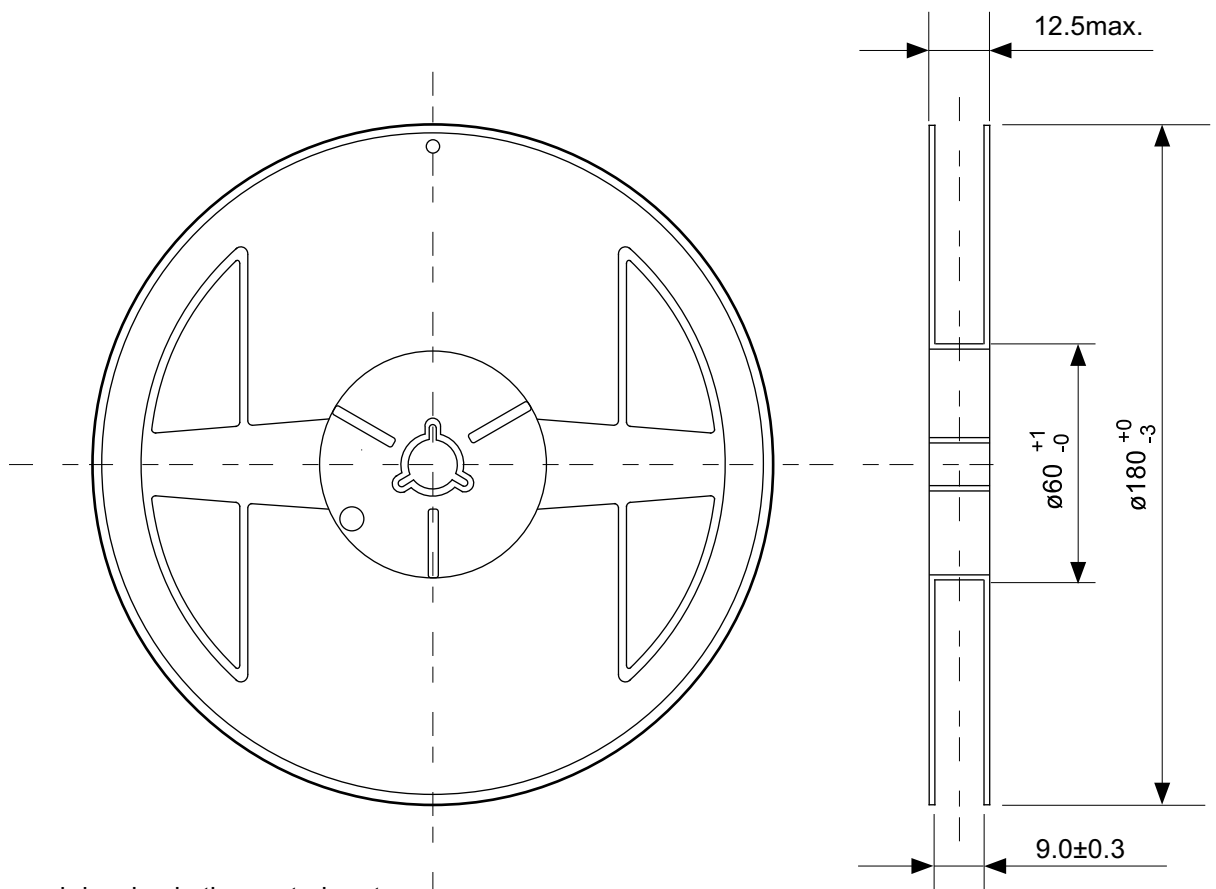
Feed direction →

No. HJ006-C-C-SD-1.0

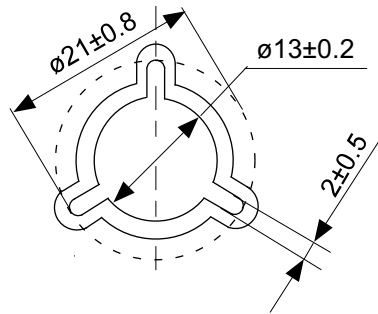
TITLE	WLP-6J-C-Carrier Tape (S-24C16C)
No.	HJ006-C-C-SD-1.0
ANGLE	
UNIT	mm

**ABLIC Inc.**

The information herein is subject to change without notice.



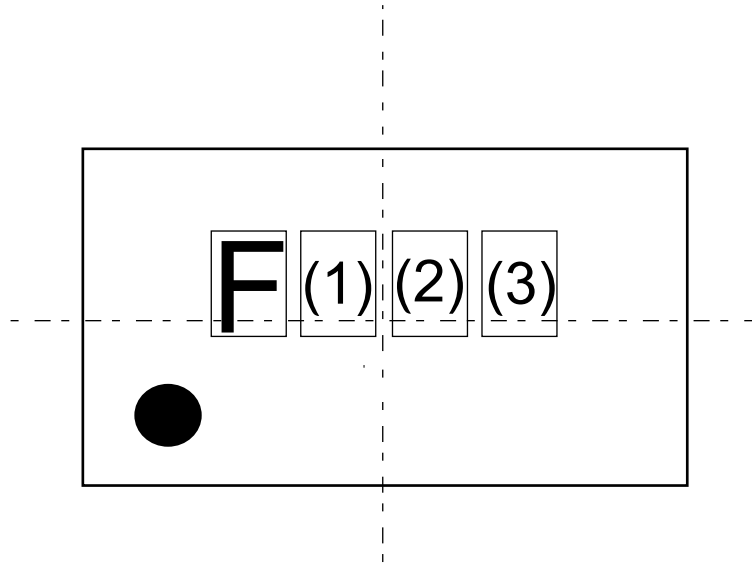
Enlarged drawing in the central part



No. HJ006-C-R-SD-1.0

TITLE	WLP-6J-C-Reel (S-24C16C)		
No.	HJ006-C-R-SD-1.0		
ANGLE		QTY.	3,000
UNIT	mm		
<b>ABLIC Inc.</b>			

The information herein is subject to change without notice.



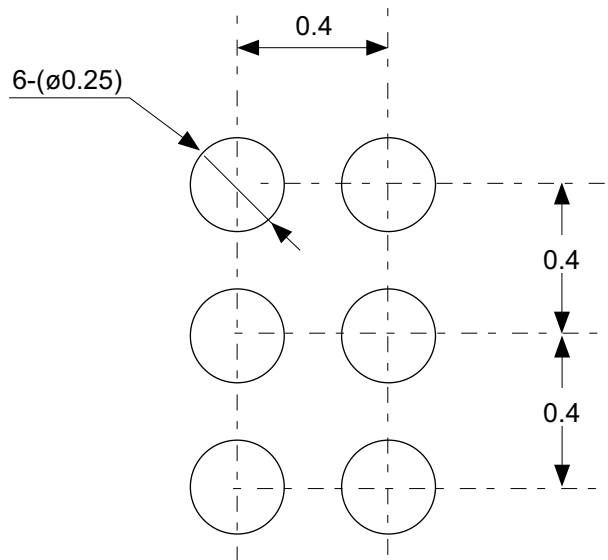
(1) : Product code

(2) , (3) : Lot code

● : 1 Pin mark

No. HJ006-C-M-SD-1.0

TITLE	WLP-6J-C-Markings (S-24C16C)		
No.	HJ006-C-M-SD-1.0		
ANGLE			
UNIT		TYPE	LASER
<b>ABLIC Inc.</b>			



No. HJ006-C-L-SD-1.0

TITLE	WLP-6J-C-Land Recommendation (S-24C16C)
No.	HJ006-C-L-SD-1.0
ANGLE	
UNIT	mm

**ABLIC Inc.**