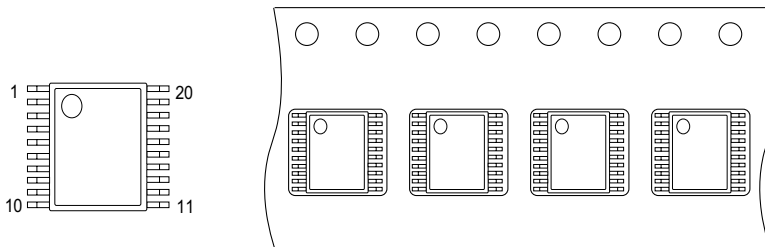
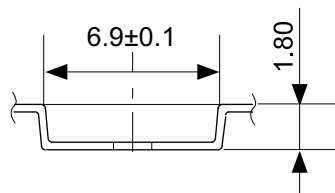
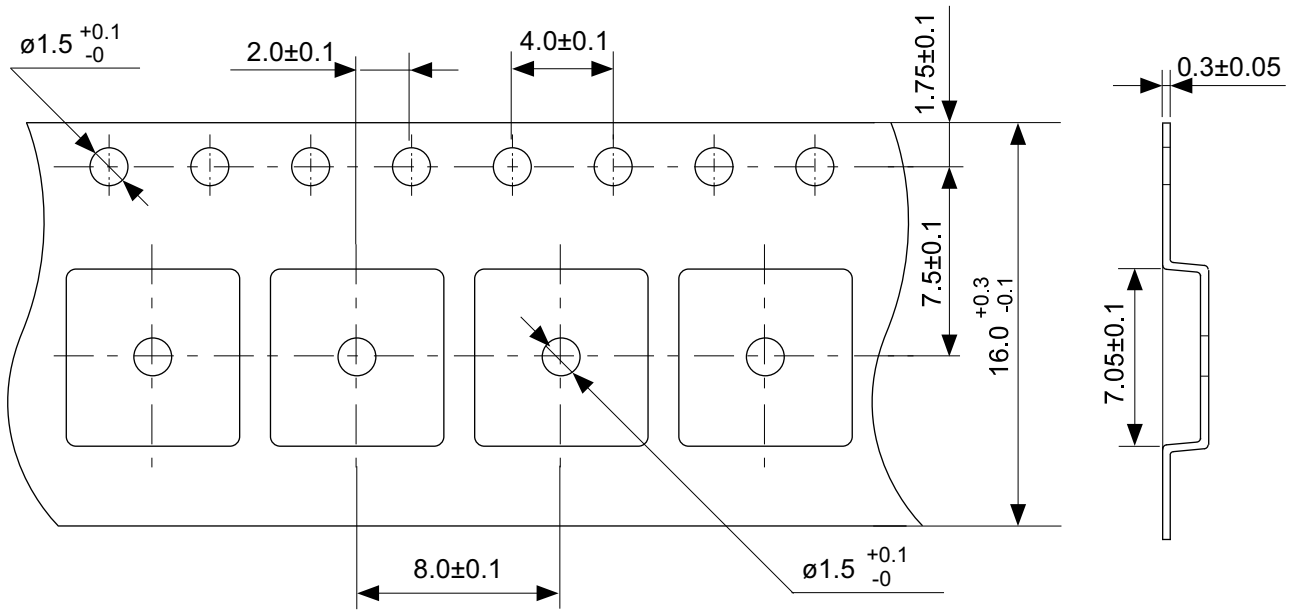


No. FT020-B-P-SD-1.0

TITLE	TSSOP20-B-PKG Dimensions
No.	FT020-B-P-SD-1.0
ANGLE	
UNIT	mm

ABLIC Inc.

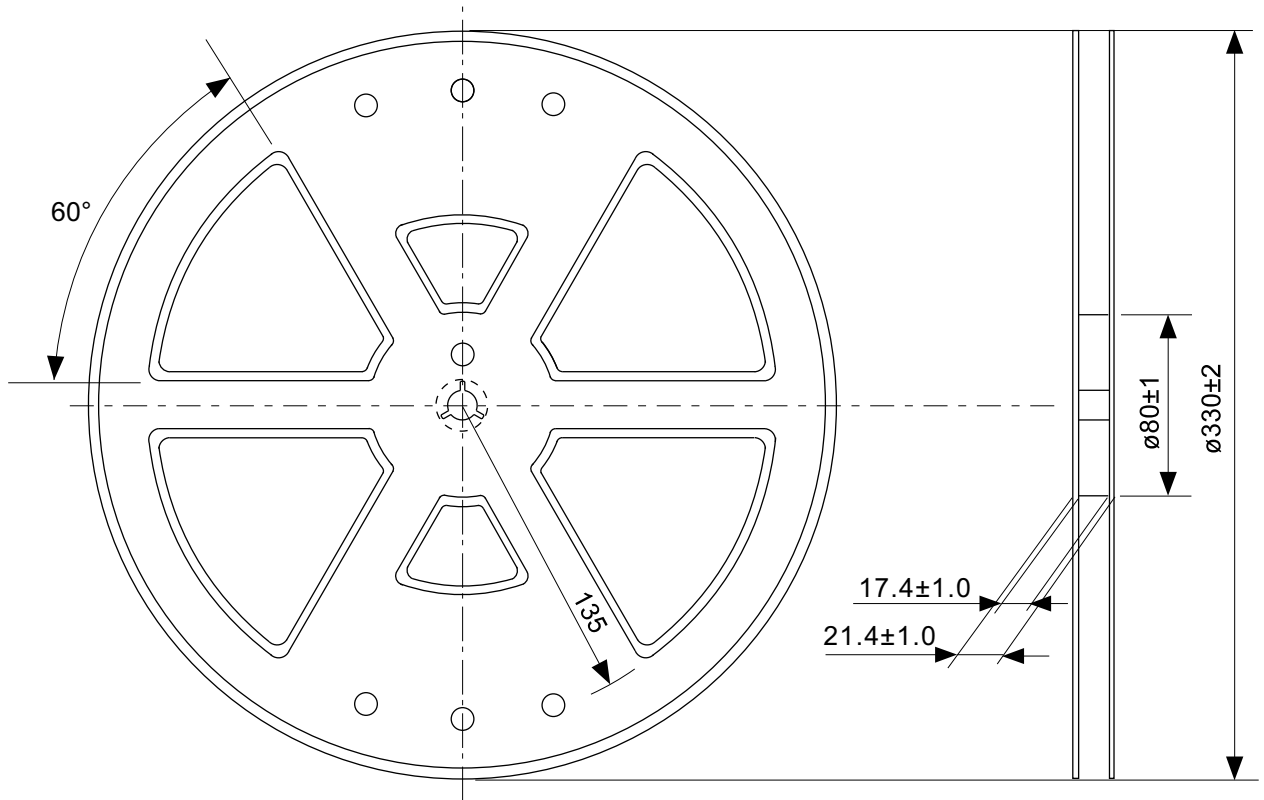


→
Feed direction

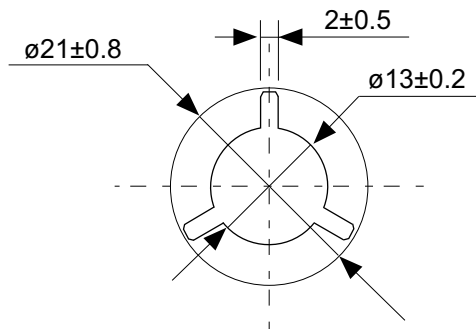
No. FT020-B-C-SD-1.0

TITLE	TSSOP20-B-Carrier Tape
No.	FT020-B-C-SD-1.0
ANGLE	
UNIT	mm
ABLIC Inc.	

The information herein is subject to change without notice.



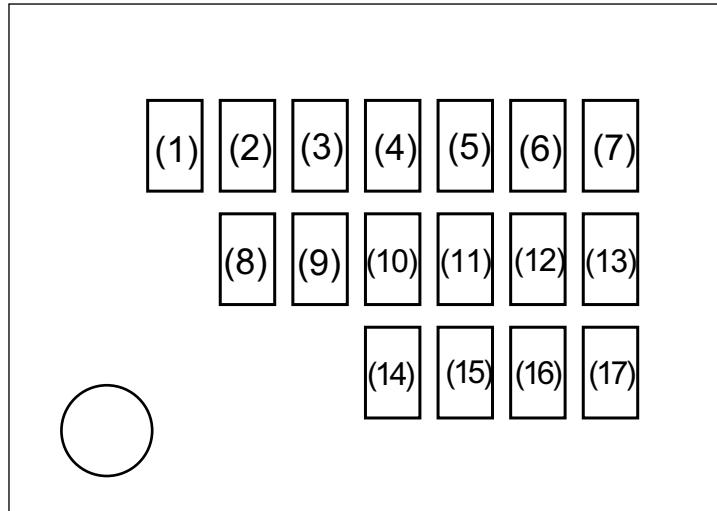
Enlarged drawing in the central part



No. FT020-B-R-SD-1.0

TITLE	TSSOP20-B-Reel		
No.	FT020-B-R-SD-1.0		
ANGLE		QTY.	4.000
UNIT	mm		
ABLIC Inc.			

The information herein is subject to change without notice.

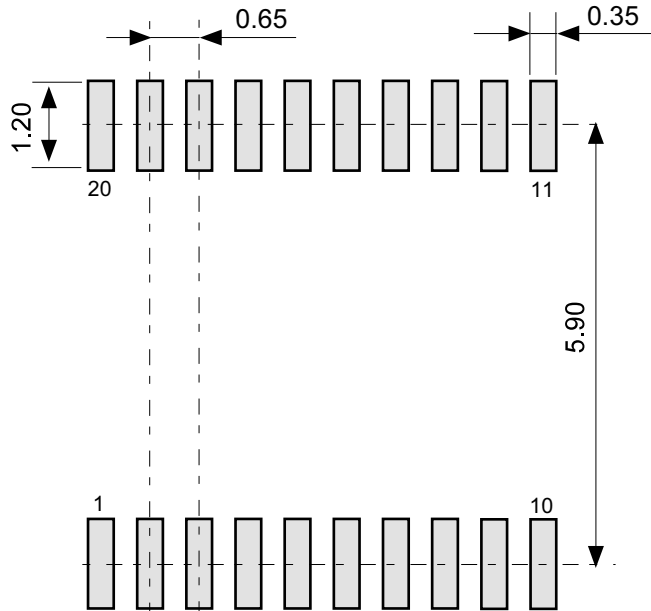


△
Pin# 1

- (1) to (10) : Product code
- (11) : Assembly code
- (12) : Year of assembly
- (13) : Month of assembly
- (14) to (17) : Lot No. code

No. FT020-B-M-SD-1.0

TITLE	TSSOP20-B-Markings		
No.	FT020-B-M-SD-1.0		
ANGLE			
UNIT		TYPE	LASER
ABLIC Inc.			



No. FT020-B-L-SD-1.0

TITLE	TSSOP20-B -Land Recommendation
No.	FT020-B-L-SD-1.0
ANGLE	
UNIT	mm
ABLIC Inc.	