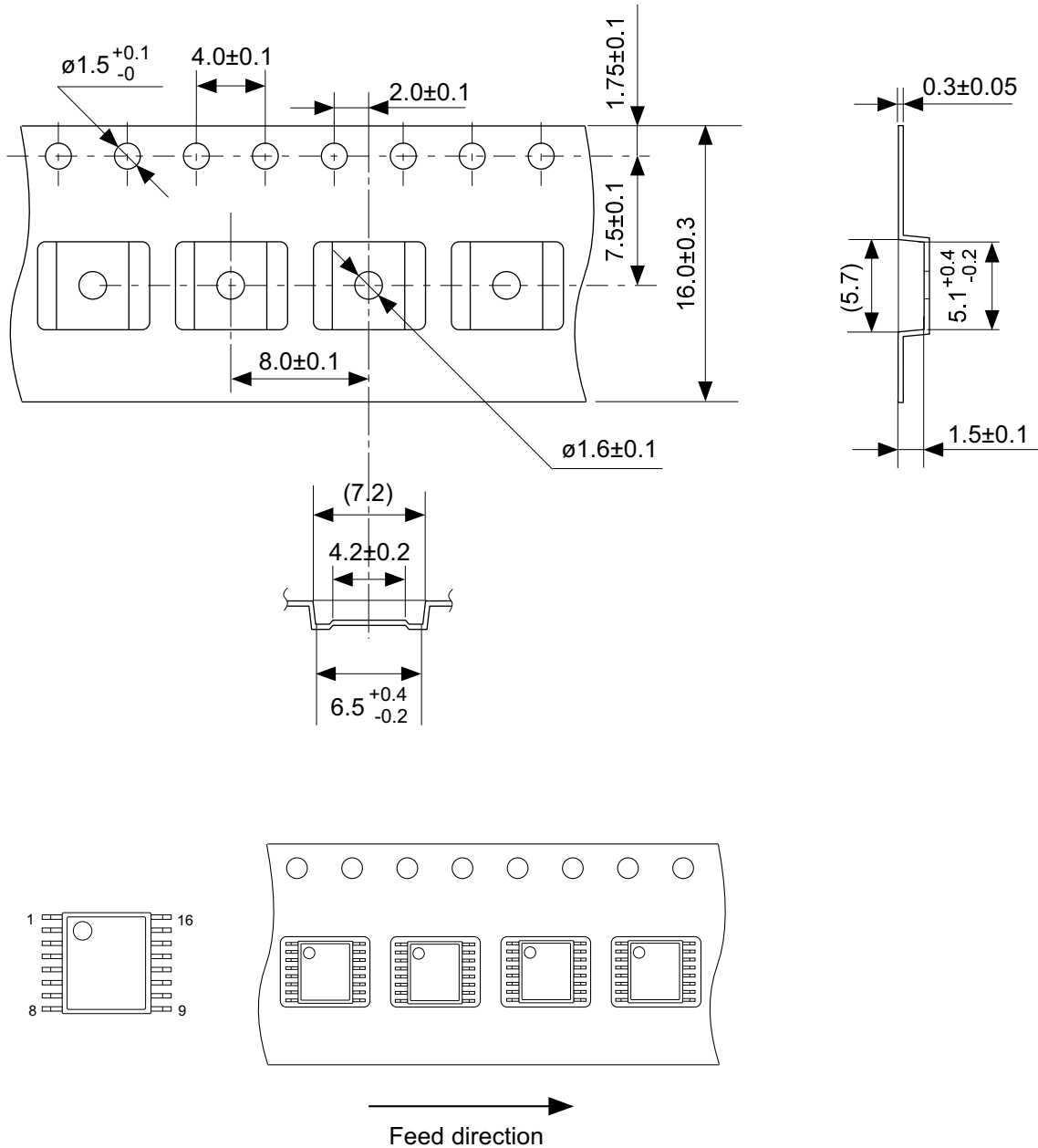


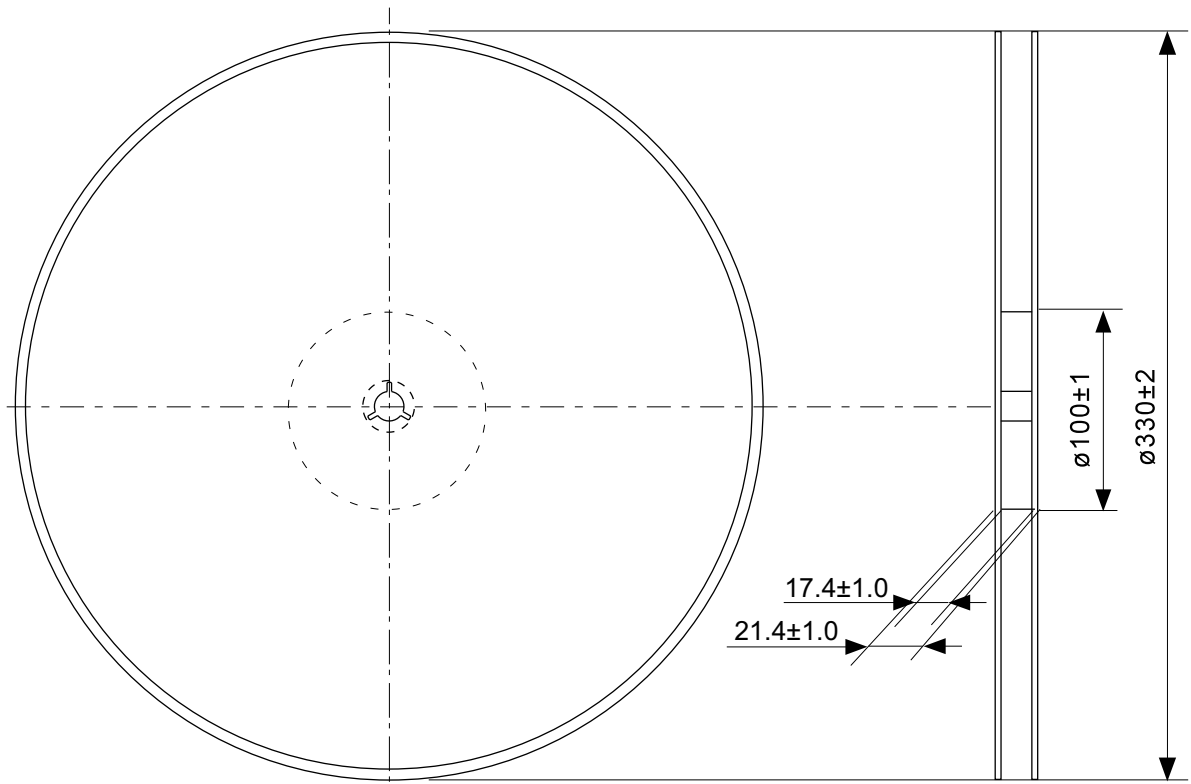
No. FT016-A-P-SD-1.2

TITLE	TSSOP16-A-PKG Dimensions
No.	FT016-A-P-SD-1.2
ANGLE	
UNIT	mm
<b>ABLIC Inc.</b>	

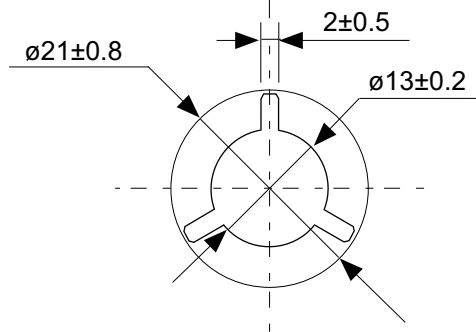


No. FT016-A-C-SD-1.1

TITLE	TSSOP16-A-Carrier Tape
No.	FT016-A-C-SD-1.1
ANGLE	
UNIT	mm
<b>ABLIC Inc.</b>	

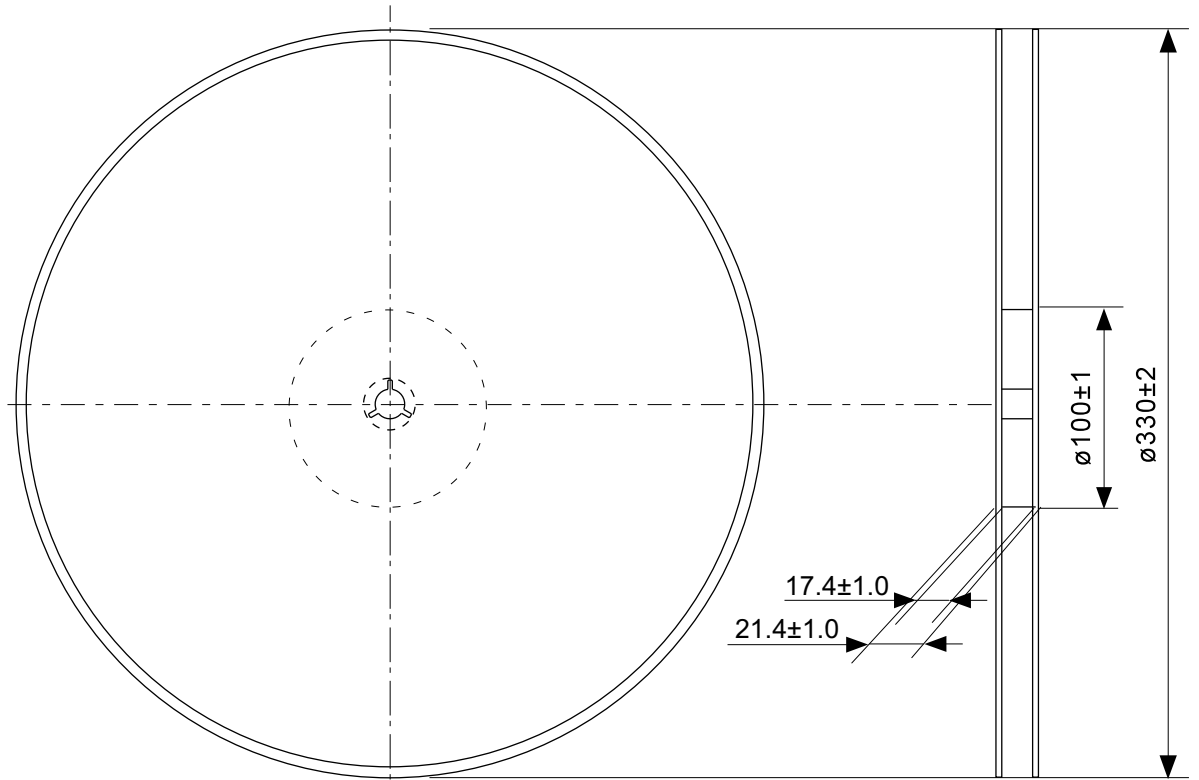


Enlarged drawing in the central part

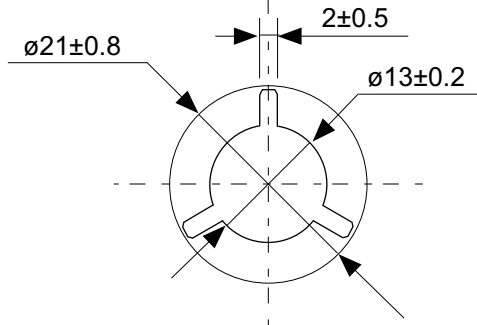


No. FT016-A-R-SD-3.0

TITLE	TSSOP16-A- Reel		
No.	FT016-A-R-SD-3.0		
ANGLE		QTY.	2,000
UNIT	mm		
<b>ABLIC Inc.</b>			



Enlarged drawing in the central part



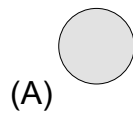
No. FT016-A-R-S1-2.0

TITLE	TSSOP16-A- Reel		
No.	FT016-A-R-S1-2.0		
ANGLE		QTY.	4,000
UNIT	mm		
<b>ABLIC Inc.</b>			

(1)	(2)	(3)	(4)	(5)	(6)	(7)
-----	-----	-----	-----	-----	-----	-----

(8)	(9)	(10)	(11)	(12)	(13)	(14)
-----	-----	------	------	------	------	------

(15)	(16)	(17)	(18)	(19)
------	------	------	------	------



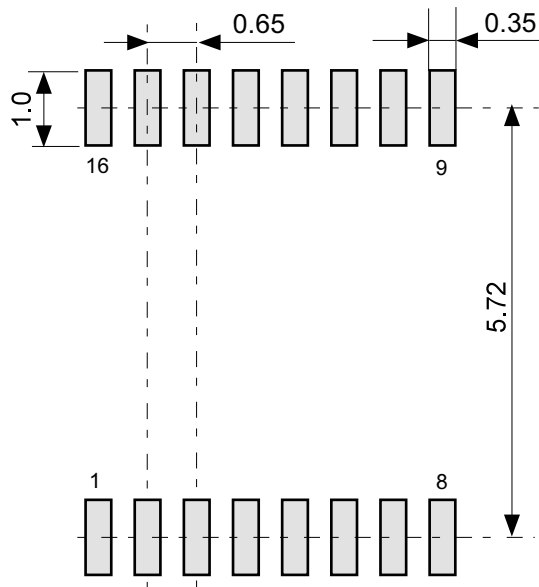
(1) to (9) or (10) or (11) : Product code

(10) or (11) or (12) to (19) : Lot No. code

(A) : 1-pin mark

No. FT016-A-M-S1-5.0

TITLE	TSSOP16-A- Markings		
No.	FT016-A-M-S1-5.0		
ANGLE			
UNIT		TYPE	LASER
<b>ABLIC Inc.</b>			



No. FT016-A-L-SD-1.1

TITLE	TSSOP16-A -Land Recommendation
No.	FT016-A-L-SD-1.1
ANGLE	
UNIT	mm
<b>ABLIC Inc.</b>	