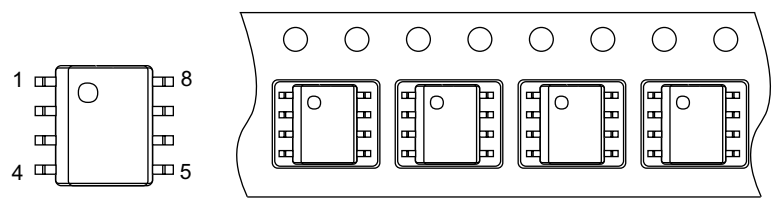
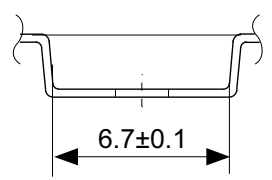
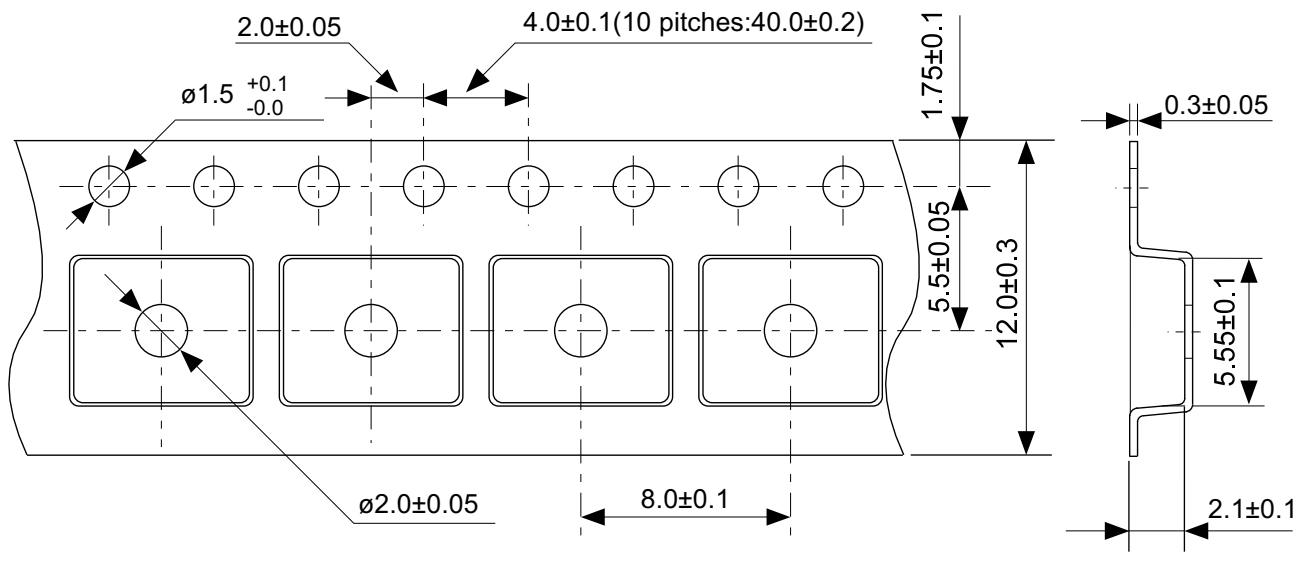


No. FH008-A-P-SD-2.0

TITLE	HSOP8A-A-PKG Dimensions
No.	FH008-A-P-SD-2.0
ANGLE	
UNIT	mm
ABLIC Inc.	

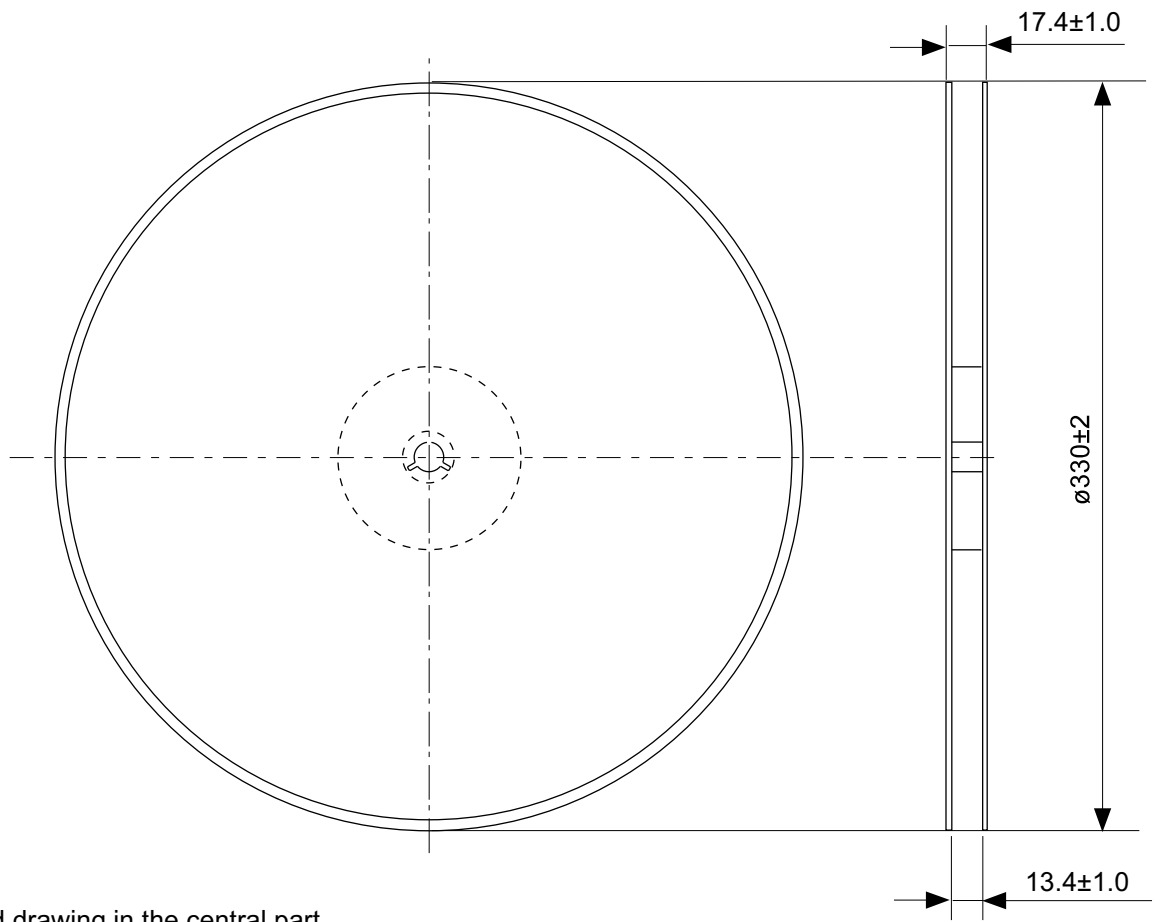


→
Feed direction

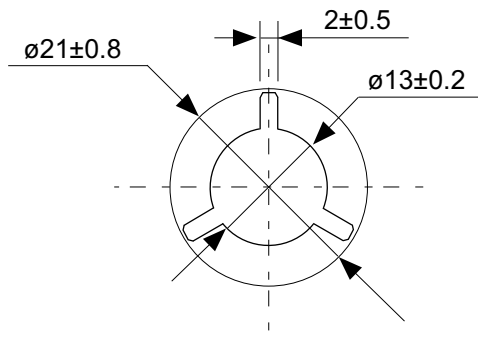
No. FH008-A-C-SD-1.0

TITLE	HSOP8A-A-Carrier Tape
No.	FH008-A-C-SD-1.0
ANGLE	
UNIT	mm

ABLIC Inc.



Enlarged drawing in the central part



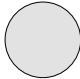
No. FH008-A-R-SD-1.0

TITLE	HSOP8A-A-Reel		
No.	FH008-A-R-SD-1.0		
ANGLE		QTY.	4,000
UNIT	mm		

ABLIC Inc.

1	2	3	4	5	6
---	---	---	---	---	---

7	8	9	10	11	12
---	---	---	----	----	----

(1) 

13	14	15	16
----	----	----	----

1 to 9 : Product code

10 : Assembly code

11 : Year of assembly

12 : Month of assembly

13 to 16 : Lot No. code

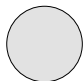
(1) : 1-pin mark

No. FH008-A-M-SD-1.0

TITLE	HSOP8A-A-Markings		
No.	FH008-A-M-SD-1.0		
ANGLE			
UNIT		TYPE	LASER
ABLIC Inc.			

1	2	3	4	5	6	7
---	---	---	---	---	---	---

8	9	10	11	12	13	14
---	---	----	----	----	----	----

(1) 	15	16	17	18
---	----	----	----	----

1 to 11 : Product code

12 : Assembly code

13 : Year of assembly

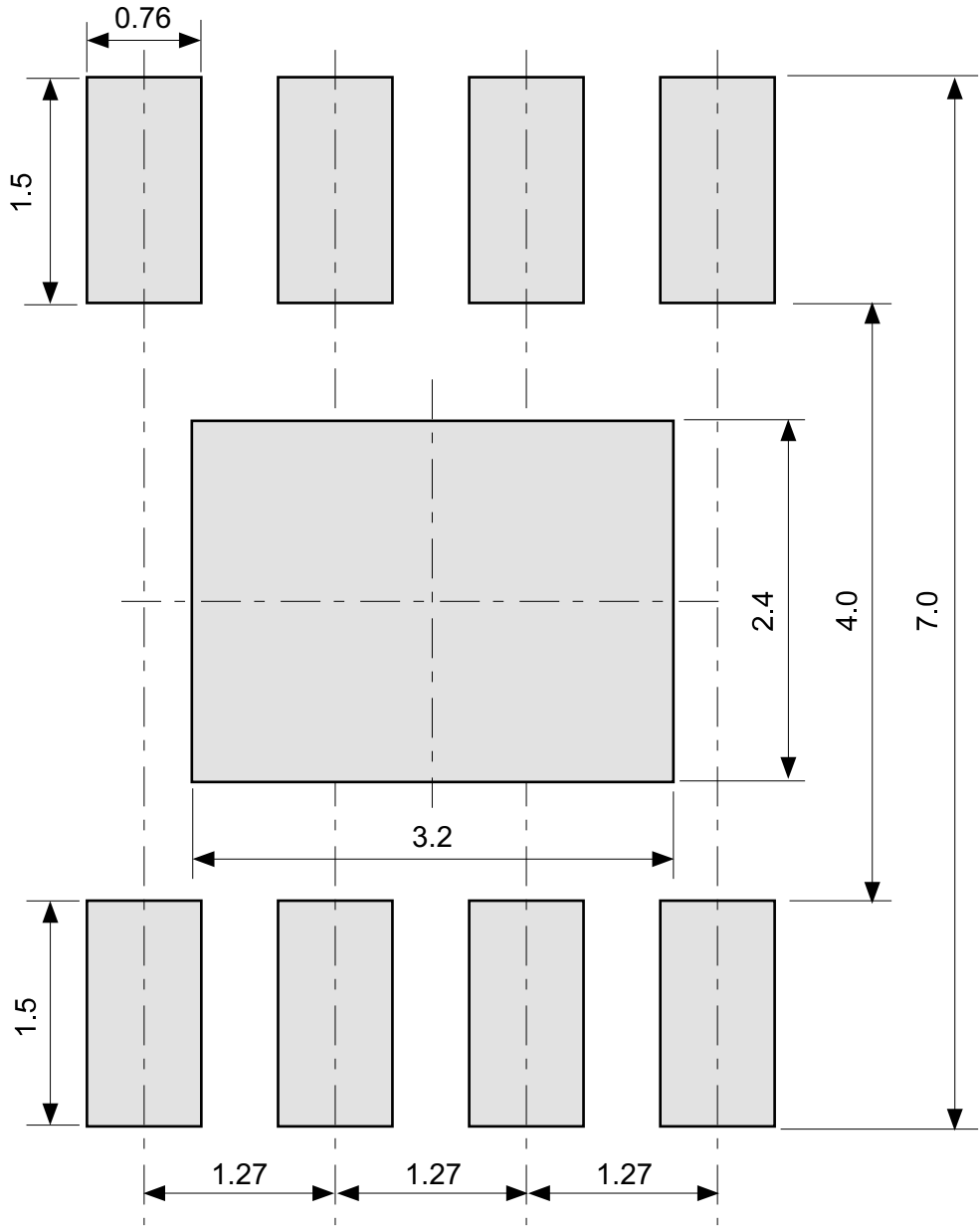
14 : Month of assembly

15 to 18 : Lot No. code

(1) : 1-pin mark

No. FH008-A-M-S1-1.0

TITLE	HSOP8A-A-Markings		
No.	FH008-A-M-S1-1.0		
ANGLE			
UNIT		TYPE	LASER
ABLIC Inc.			



No. FH008-A-L-SD-1.0

TITLE	HSOP8A-A -Land Recommendation
No.	FH008-A-L-SD-1.0
ANGLE	
UNIT	mm
ABLIC Inc.	