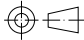
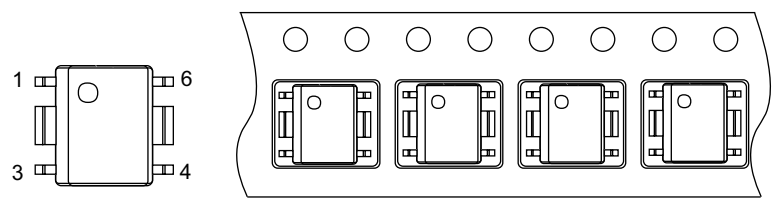
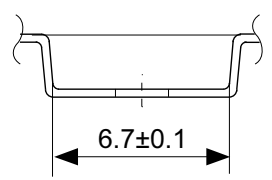
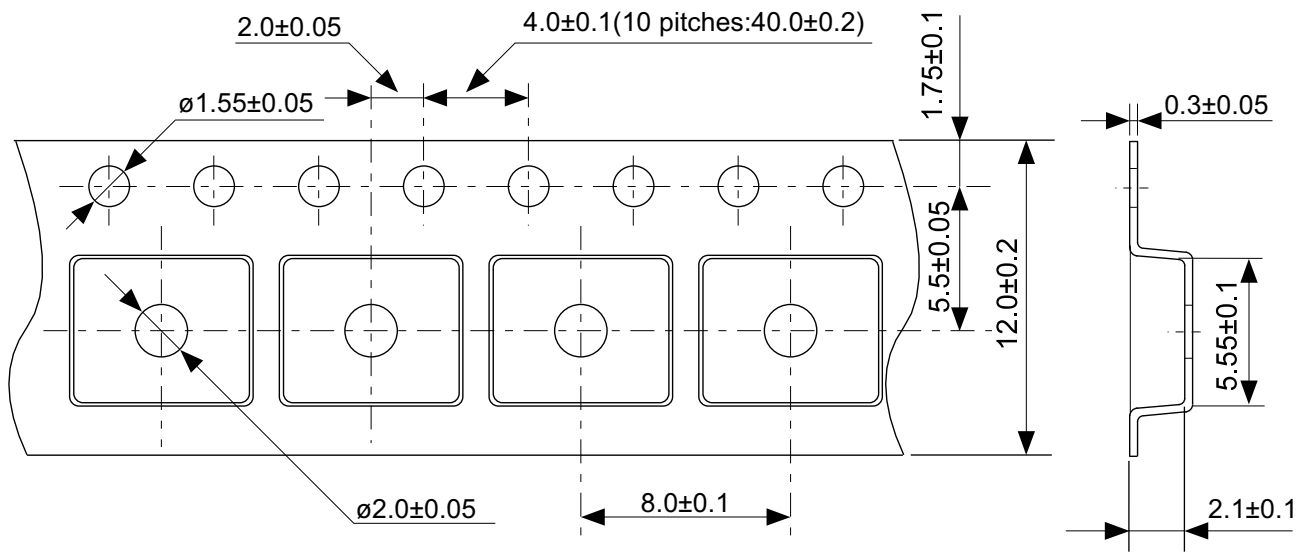


No. FH006-A-P-SD-2.1

TITLE	HSOP6-A-PKG Dimensions
No.	FH006-A-P-SD-2.1
ANGLE	
UNIT	mm
ABLIC Inc.	

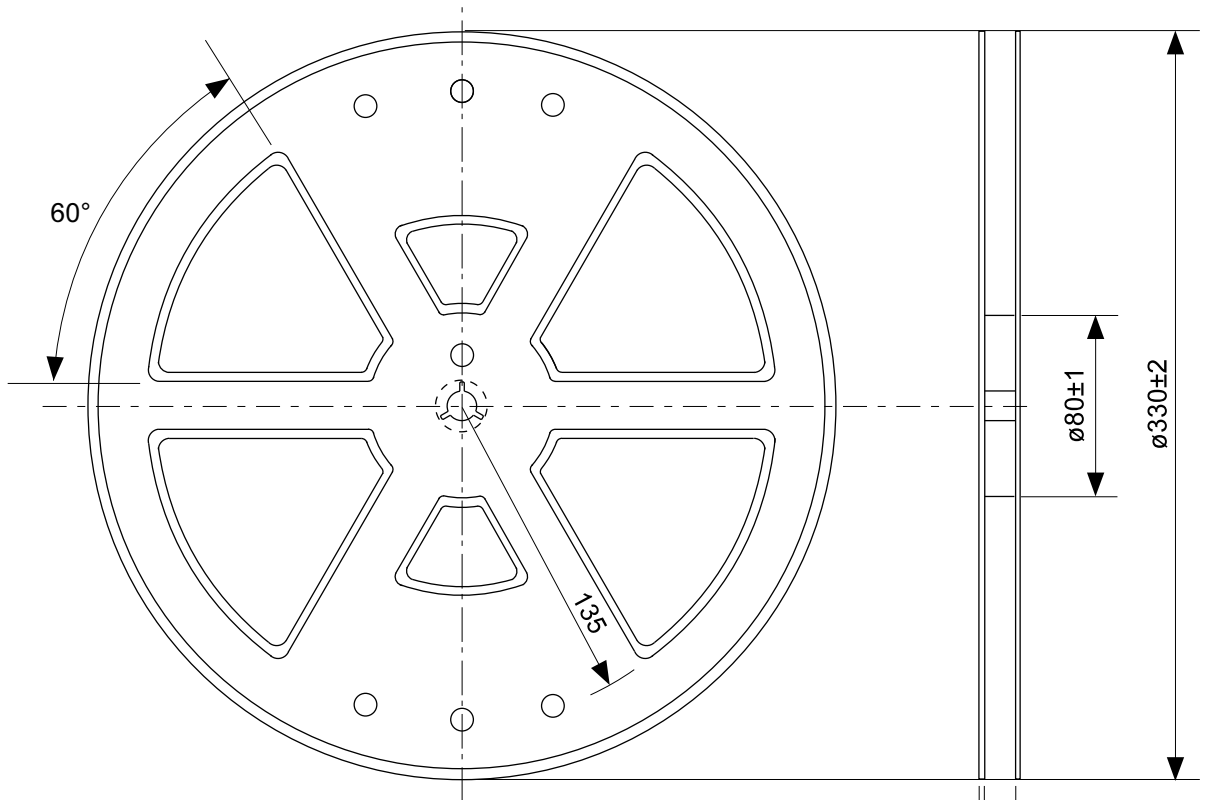


→
Feed direction

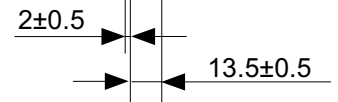
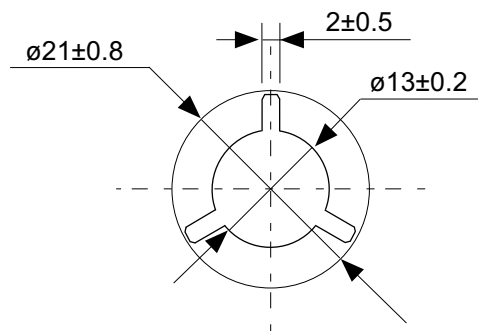
No. FH006-A-C-SD-2.0

TITLE	HSOP6-A-Carrier Tape
No.	FH006-A-C-SD-2.0
ANGLE	
UNIT	mm

ABLIC Inc.

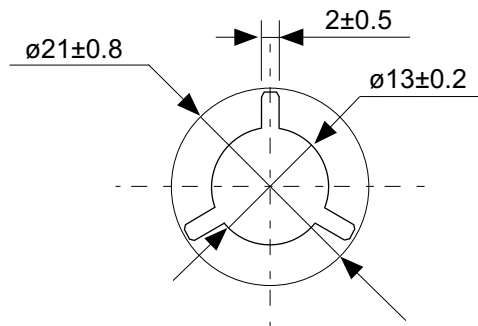
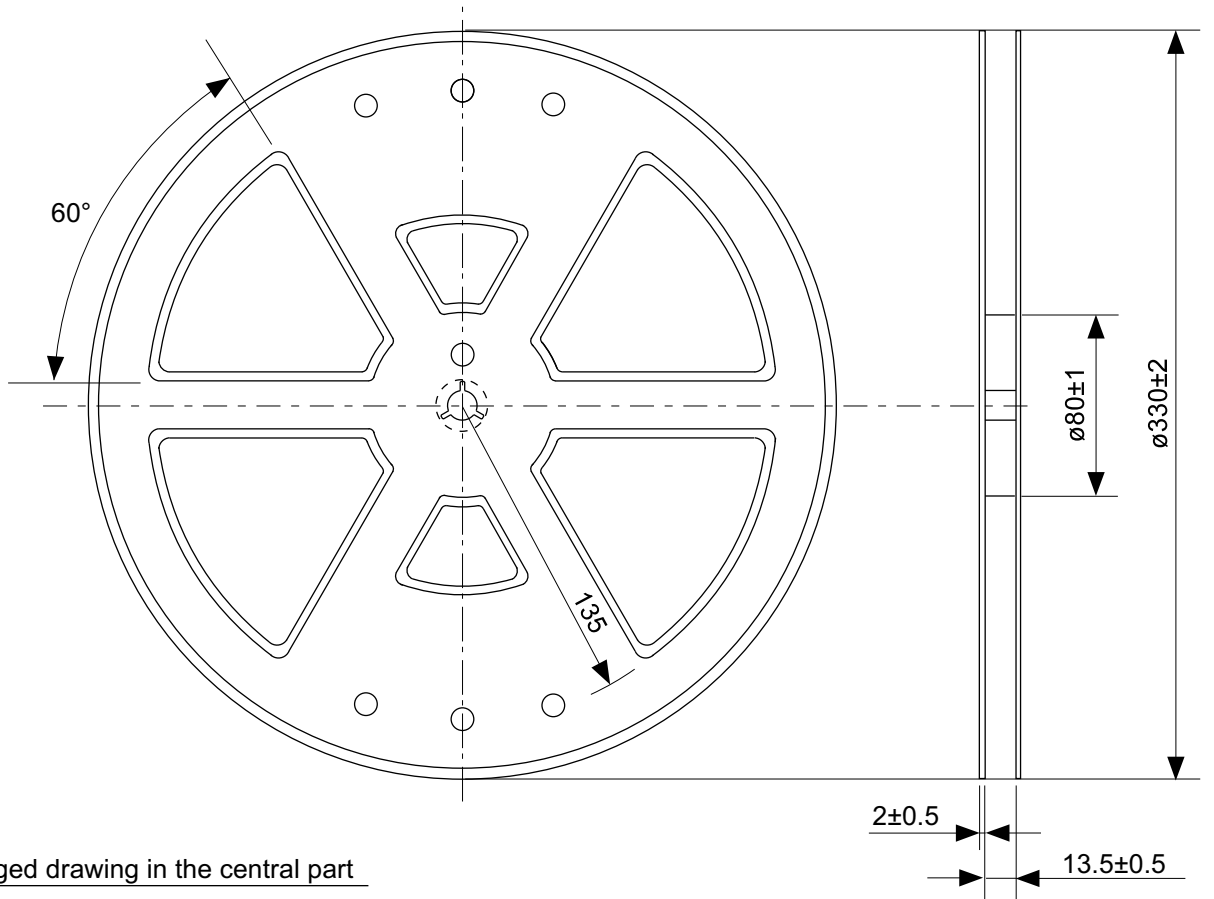


Enlarged drawing in the central part



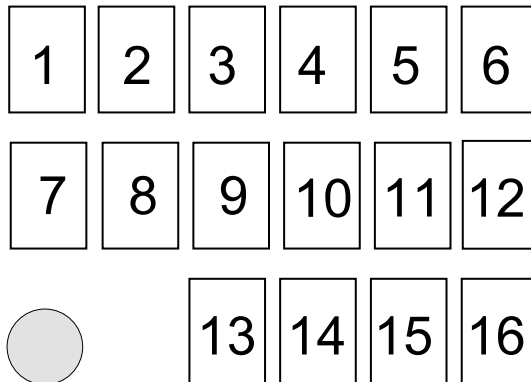
No. FH006-A-R-SD-1.0

TITLE	HSOP6-A-Reel		
No.	FH006-A-R-SD-1.0		
ANGLE		QTY.	2,000
UNIT	mm		
ABLIC Inc.			



No. FH006-A-R-S1-1.0

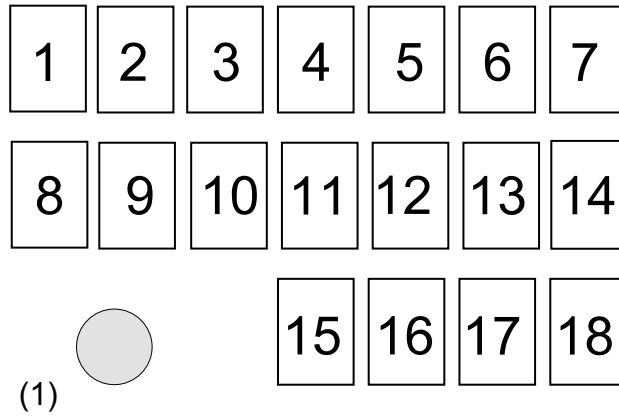
TITLE	HSOP6-A-Reel		
No.	FH006-A-R-S1-1.0		
ANGLE		QTY.	4,000
UNIT	mm		
ABLIC Inc.			



- 1 to 9 : Product code
- 10 : Assembly code
- 11 : Year of assembly
- 12 : Month of assembly
- 13 to 16 : Lot No. code
- (1) : 1-pin mark

No. FH006-A-M-SD-1.0

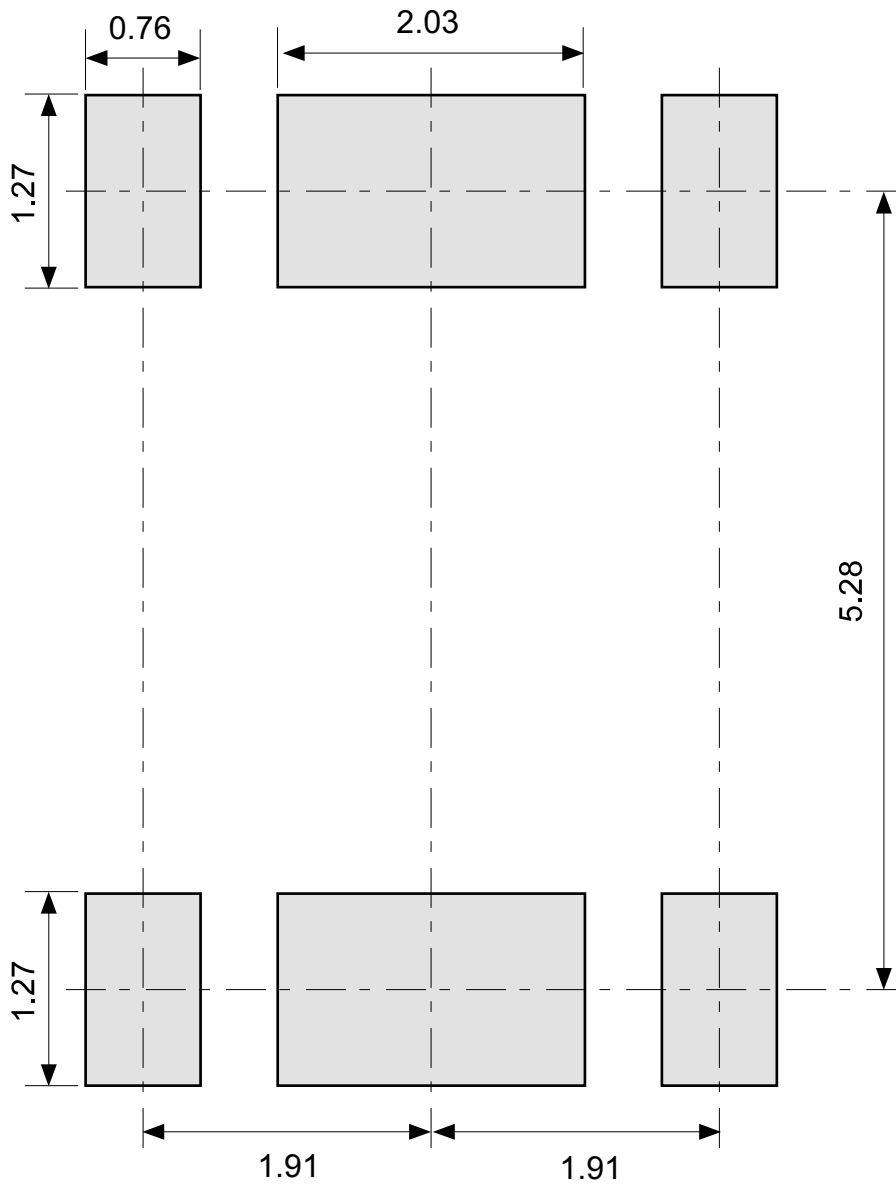
TITLE	HSOP6-A-Marking		
No.	FH006-A-M-SD-1.0		
ANGLE			
UNIT		TYPE	LASER
ABLIC Inc.			



- 1 to 11 : Product code
- 12 : Assembly code
- 13 : Year of assembly
- 14 : Month of assembly
- 15 to 18 : Lot No. code
- (1) : 1-pin mark

No. FH006-A-M-S1-1.0

TITLE	HSOP6-A-Markings		
No.	FH006-A-M-S1-1.0		
ANGLE			
UNIT		TYPE	LASER
ABLIC Inc.			



No. FH006-A-L-SD-2.0

TITLE	HSOP6-A -Land Recommendation
No.	FH006-A-L-SD-2.0
ANGLE	
UNIT	mm
ABLIC Inc.	