

CMOS IC Application Note

S-8249 Series Usage Guidelines

Rev.1.0_01

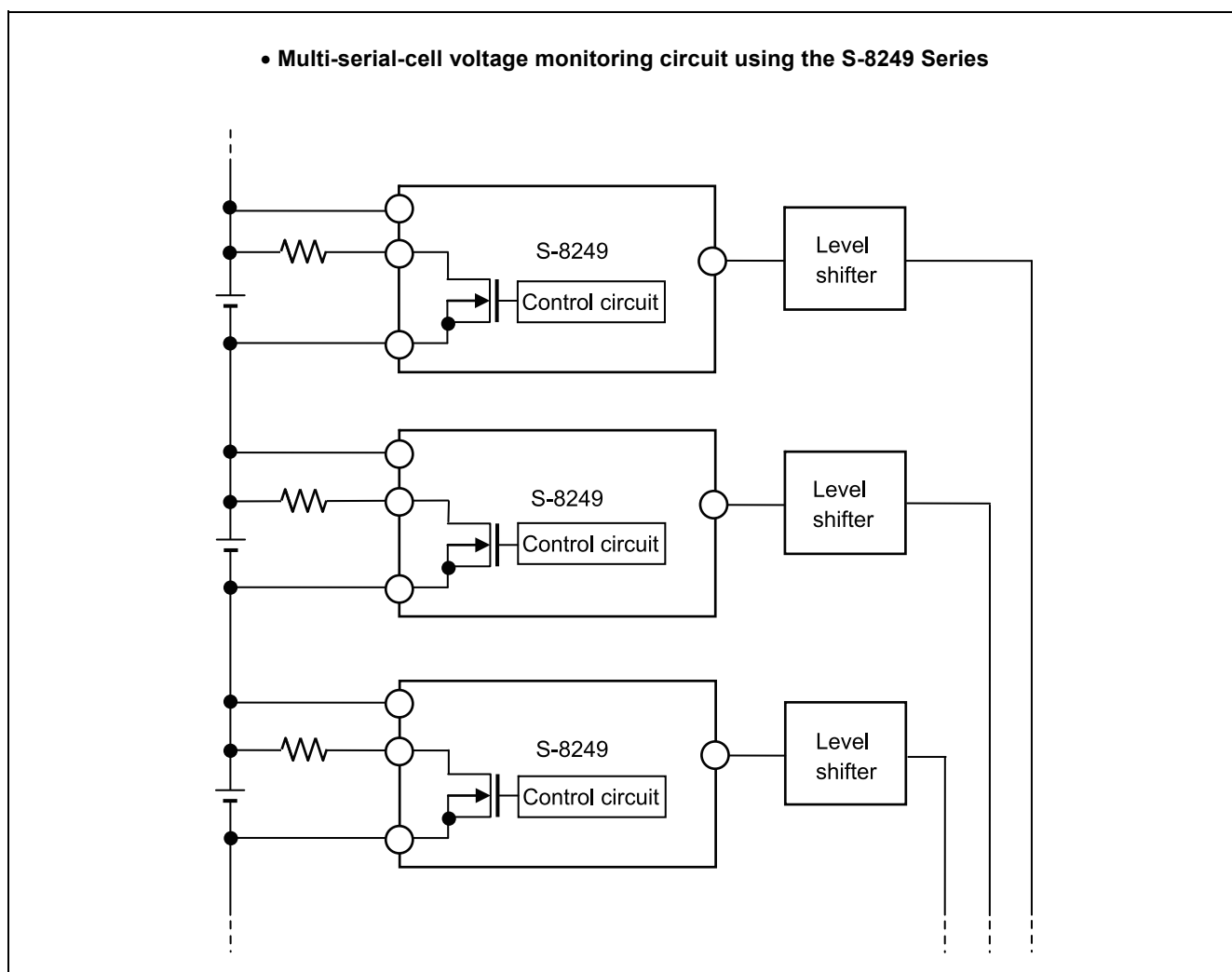
© ABLIC Inc., 2017

The S-8249 Series is a voltage monitoring IC with a cell balancing function and includes a high-accuracy voltage detection circuit and a delay circuit.

This application note is a guideline on the typical connection examples when using the S-8249 Series for applications. Refer to the datasheet for details and spec of this IC.

It is possible to configure the following applications with the S-8249 Series.

- Multi-serial-cell voltage monitoring circuit with cell balancing function



Contents

1. Voltage monitoring circuit using the S-8249 Series	3
1. 1 Connection example of voltage monitoring circuit with cell balancing function	3
2. Example of application circuit	4
2. 1 Voltage monitoring circuit connection example with an external MOS FET added to increase cell balancing current.....	4
2. 2 Connection example of 3-serial cell voltage monitoring circuit with cell balancing function.....	5
2. 3 Connection example of 3-serial cell voltage monitoring circuit with power saving mode control function and a cell balancing function	6
2. 4 Connection example of 3-serial cell voltage monitoring circuit with cell balancing function when using a photocoupler.....	7
3. External components list	8
4. Precaution	9
5. Related source	10

1. Voltage monitoring circuit using the S-8249 Series

1. 1 Connection example of voltage monitoring circuit with cell balancing function

Figure 1 shows an example of the S-8249 Series voltage monitoring circuit with a cell balancing function.

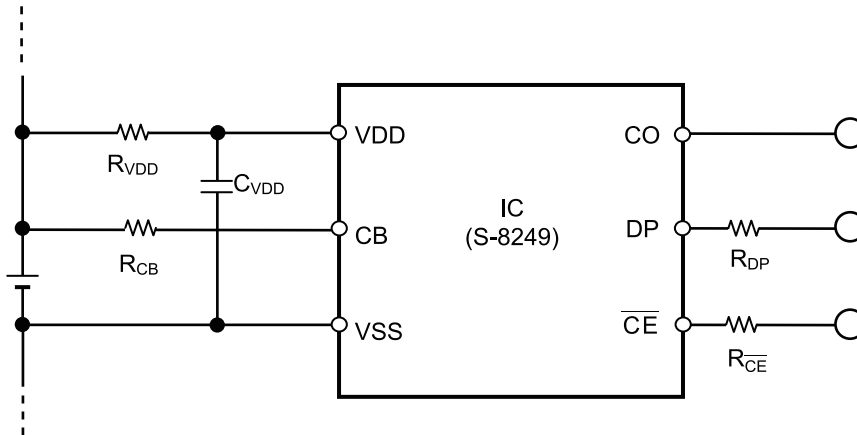


Figure 1

Table 1

Symbol	Typical	Unit	Components Name	Maker	Remark
IC	–	–	S-8249	ABLIC Inc.	Necessary
R_{VDD}	330	Ω	MCR03	ROHM CO., LTD.	Recommended
R_{CB}	–	–	–	–	User setting
R_{DP}	1	$k\Omega$	MCR03	ROHM CO., LTD.	Recommended
R_{CE}	1	$k\Omega$	MCR03	ROHM CO., LTD.	Recommended
C_{VDD}	0.1	μF	GRM188	Murata Manufacturing Co., Ltd.	Recommended

Caution 1. The above constants may be changed without notice.

2. The example of connection shown above and the constant do not guarantee proper operation. Perform thorough evaluation using the actual application to set the constant.

2. Example of application circuit

2. 1 Voltage monitoring circuit connection example with an external MOS FET added to increase cell balancing current

Figure 2 shows a connection example with an external MOS FET added to the S-8249 Series to increase cell balancing current.

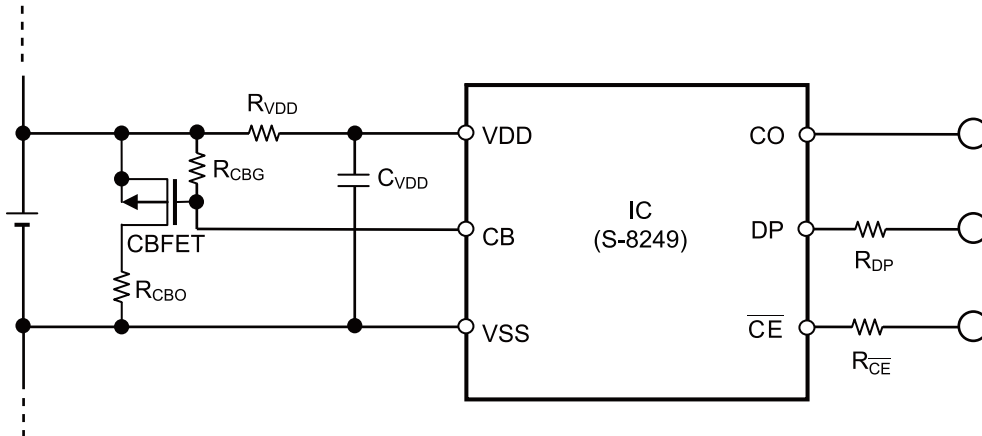


Figure 2

Table 2

Symbol	Typical	Unit	Components Name	Maker	Remark
IC	–	–	S-8249	ABLIC Inc.	Necessary
R_{VDD}	330	Ω	MCR03	ROHM CO., LTD.	Recommended
R_{DP}	1	$k\Omega$	MCR03	ROHM CO., LTD.	Recommended
$R_{\overline{CE}}$	1	$k\Omega$	MCR03	ROHM CO., LTD.	Recommended
C_{VDD}	0.1	μF	GRM188	Murata Manufacturing Co., Ltd.	Recommended
R_{CBG}^{*1}	1	$M\Omega$	MCR03	ROHM CO., LTD.	Recommended
R_{CBO}^{*2}	–	–	–	–	User setting
$CBFET^{*2}$	–	–	–	–	User setting

*1. Set R_{CBG} to a large value so that it can turn on CBFET.

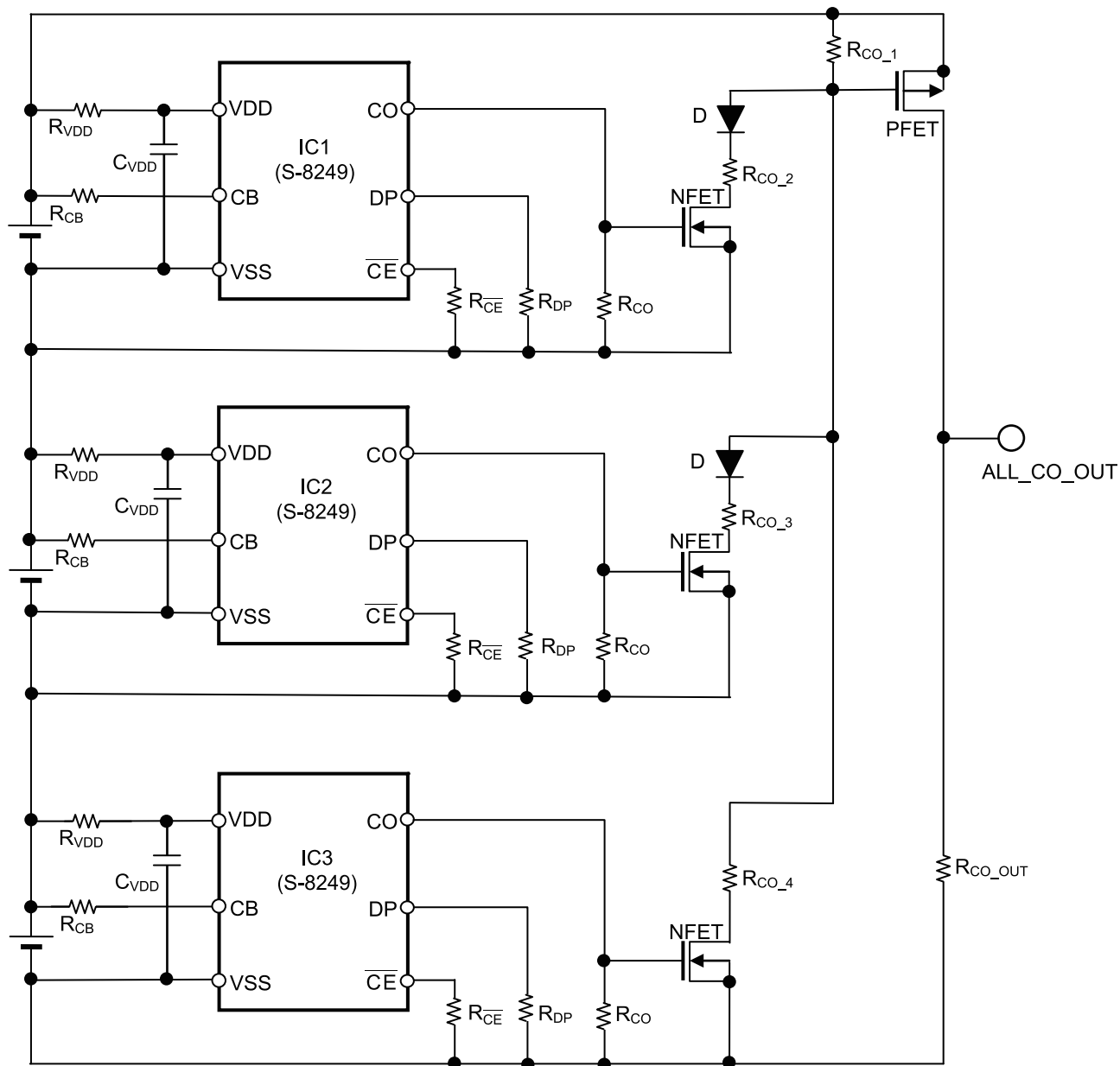
*2. The cell balancing current can be adjusted by R_{CBO} . Set the resistance of CBFET to a value smaller than R_{CBO} .

Caution 1. The above constants may be changed without notice.

2. The example of connection shown above and the constant do not guarantee proper operation. Perform thorough evaluation using the actual application to set the constant.

2. 2 Connection example of 3-serial cell voltage monitoring circuit with cell balancing function

Figure 3 shows an example of the S-8249 Series 3-serial cell voltage monitoring circuit with a cell balancing function.



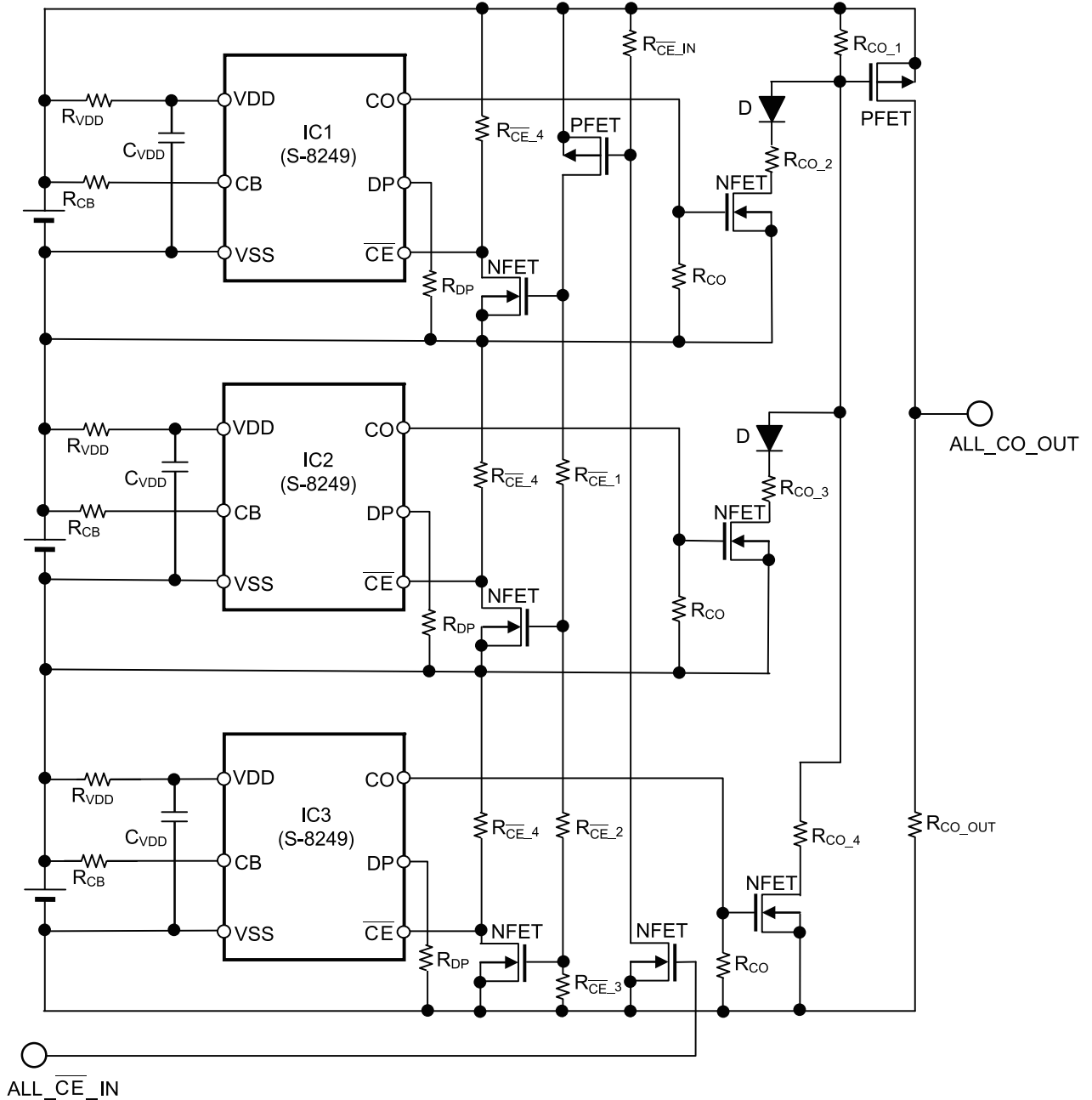
Remark Refer to "3. External components list" for constants of external components.

Figure 3

- Caution 1.** The above constants may be changed without notice.
2. The example of connection shown above and the constant do not guarantee proper operation. Perform thorough evaluation using the actual application to set the constant.

2. 3 Connection example of 3-serial cell voltage monitoring circuit with power saving mode control function and cell balancing function

Figure 4 shows an example of the S-8249 Series 3-serial cell voltage monitoring circuit with a power saving mode control function and a cell balancing function.



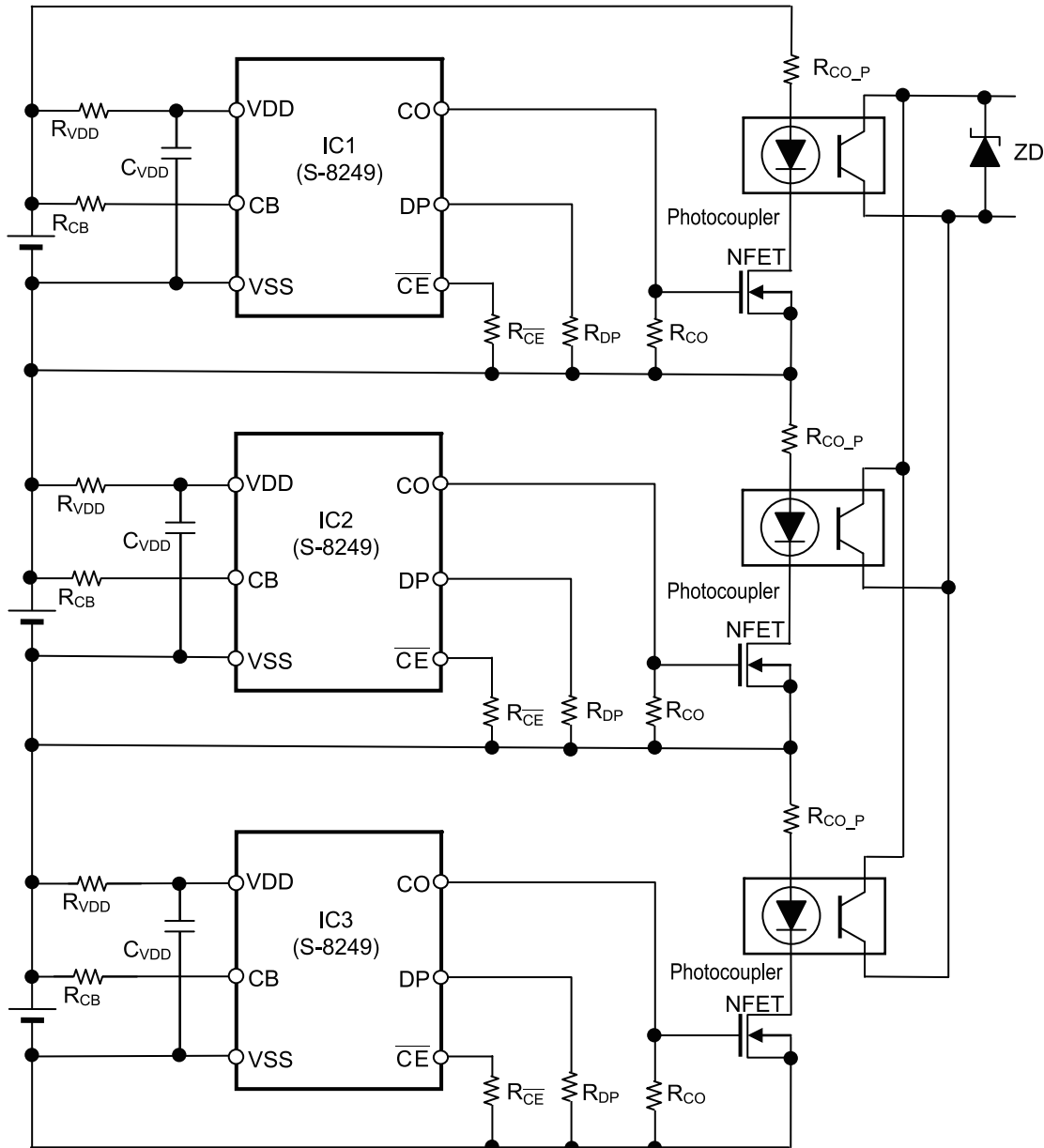
Remark Refer to "3. External components list" for constants of external components.

Figure 4

- Caution 1.** The above constants may be changed without notice.
2. The example of connection shown above and the constant do not guarantee proper operation. Perform thorough evaluation using the actual application to set the constant.

2. 4 Connection example of 3-serial cell voltage monitoring circuit with cell balancing function when using a photocoupler

Figure 5 shows an example of the S-8249 Series 3-serial cell voltage monitoring circuit with a cell balancing function when using a photocoupler.



Remark Refer to "3. External components list" for constants of external components.

Figure 5

- Caution 1.** The above constants may be changed without notice.
2. The example of connection shown above and the constant do not guarantee proper operation. Perform thorough evaluation using the actual application to set the constant.

3. External components list

Table 3 shows external components in the connection examples in Figure 3 to Figure 5.

Table 3

Symbol	Typical	Unit	Components Name	Maker	Remark
IC1 to IC3	–	–	S-8249	ABLIC Inc.	Necessary
R_{VDD}	330	Ω	MCR03	ROHM CO., LTD.	Recommended
R_{CB}	–	–	–	–	User setting
R_{DP}	1	$k\Omega$	MCR03	ROHM CO., LTD.	Recommended
R_{CE}	1	$k\Omega$	MCR03	ROHM CO., LTD.	Recommended
R_{CE_IN}	1	$M\Omega$	MCR03	ROHM CO., LTD.	Recommended
R_{CE_1}	1	$M\Omega$	MCR03	ROHM CO., LTD.	Recommended
R_{CE_2}	1	$M\Omega$	MCR03	ROHM CO., LTD.	Recommended
R_{CE_3}	1	$M\Omega$	MCR03	ROHM CO., LTD.	Recommended
R_{CE_4}	10	$k\Omega$	MCR03	ROHM CO., LTD.	Recommended
C_{VDD}	0.1	μF	GRM188	Murata Manufacturing Co., Ltd.	Recommended
NFET	–	–	2SK1590C	Renesas Electronics Corporation	Recommended
PFET	–	–	2SJ210C	Renesas Electronics Corporation	Recommended
R_{CO}	1	$M\Omega$	MCR03	ROHM CO., LTD.	Recommended
R_{CO_1}	1	$M\Omega$	MCR03	ROHM CO., LTD.	Recommended
R_{CO_2}	0	Ω	MCR03	ROHM CO., LTD.	Recommended
R_{CO_3}	1	$M\Omega$	MCR03	ROHM CO., LTD.	Recommended
R_{CO_4}	2	$M\Omega$	MCR03	ROHM CO., LTD.	Recommended
R_{CO_P}	–	–	–	–	User setting
D	–	–	1SS355VM	ROHM CO., LTD.	Recommended
R_{CO_OUT}	1	$M\Omega$	MCR03	ROHM CO., LTD.	Recommended
Photocoupler	–	–	–	–	–
ZD	–	–	–	–	–

Caution 1. The above constants may be changed without notice.

- The example of connection shown above and the constant do not guarantee proper operation. Perform thorough evaluation using the actual application to set the constant.
- Select external components considering its pressure when configuring a series voltage monitoring circuit with 5 cells or more.

4. Precaution

- The usage described in this application note is typical example with our IC. Perform evaluation fully before use.
- When designing for mass production using an application circuit described herein, the product deviation and temperature characteristics of the external components should be taken into consideration. ABLIC Inc. shall not bear any responsibility for patent infringements related to products using the circuits described herein.
- ABLIC Inc. claims no responsibility for any disputes arising out of or in connection with any infringement by products including this IC of patents owned by a third party.

5. Related source

Refer to the following datasheet for details of the S-8249 Series.

S-8249 Series Datasheet

The information described in this application note and the datasheet is subject to change without notice.

Contact our sales office for details.

Regarding the newest version of the datasheet, select product category and product name on our website, and download the PDF file.

www.ablic.com

ABLIC Inc. website

Disclaimers (Handling Precautions)

1. All the information described herein (product data, specifications, figures, tables, programs, algorithms and application circuit examples, etc.) is current as of publishing date of this document and is subject to change without notice.
2. The circuit examples and the usages described herein are for reference only, and do not guarantee the success of any specific mass-production design.
ABLIC Inc. is not liable for any losses, damages, claims or demands caused by the reasons other than the products described herein (hereinafter "the products") or infringement of third-party intellectual property right and any other right due to the use of the information described herein.
3. ABLIC Inc. is not liable for any losses, damages, claims or demands caused by the incorrect information described herein.
4. Be careful to use the products within their ranges described herein. Pay special attention for use to the absolute maximum ratings, operation voltage range and electrical characteristics, etc.
ABLIC Inc. is not liable for any losses, damages, claims or demands caused by failures and / or accidents, etc. due to the use of the products outside their specified ranges.
5. Before using the products, confirm their applications, and the laws and regulations of the region or country where they are used and verify suitability, safety and other factors for the intended use.
6. When exporting the products, comply with the Foreign Exchange and Foreign Trade Act and all other export-related laws, and follow the required procedures.
7. The products are strictly prohibited from using, providing or exporting for the purposes of the development of weapons of mass destruction or military use. ABLIC Inc. is not liable for any losses, damages, claims or demands caused by any provision or export to the person or entity who intends to develop, manufacture, use or store nuclear, biological or chemical weapons or missiles, or use any other military purposes.
8. The products are not designed to be used as part of any device or equipment that may affect the human body, human life, or assets (such as medical equipment, disaster prevention systems, security systems, combustion control systems, infrastructure control systems, vehicle equipment, traffic systems, in-vehicle equipment, aviation equipment, aerospace equipment, and nuclear-related equipment), excluding when specified for in-vehicle use or other uses by ABLIC, Inc. Do not apply the products to the above listed devices and equipments.
ABLIC Inc. is not liable for any losses, damages, claims or demands caused by unauthorized or unspecified use of the products.
9. In general, semiconductor products may fail or malfunction with some probability. The user of the products should therefore take responsibility to give thorough consideration to safety design including redundancy, fire spread prevention measures, and malfunction prevention to prevent accidents causing injury or death, fires and social damage, etc. that may ensue from the products' failure or malfunction.
The entire system in which the products are used must be sufficiently evaluated and judged whether the products are allowed to apply for the system on customer's own responsibility.
10. The products are not designed to be radiation-proof. The necessary radiation measures should be taken in the product design by the customer depending on the intended use.
11. The products do not affect human health under normal use. However, they contain chemical substances and heavy metals and should therefore not be put in the mouth. The fracture surfaces of wafers and chips may be sharp. Be careful when handling these with the bare hands to prevent injuries, etc.
12. When disposing of the products, comply with the laws and ordinances of the country or region where they are used.
13. The information described herein contains copyright information and know-how of ABLIC Inc. The information described herein does not convey any license under any intellectual property rights or any other rights belonging to ABLIC Inc. or a third party. Reproduction or copying of the information from this document or any part of this document described herein for the purpose of disclosing it to a third-party is strictly prohibited without the express permission of ABLIC Inc.
14. For more details on the information described herein or any other questions, please contact ABLIC Inc.'s sales representative.
15. This Disclaimers have been delivered in a text using the Japanese language, which text, despite any translations into the English language and the Chinese language, shall be controlling.

2.4-2019.07