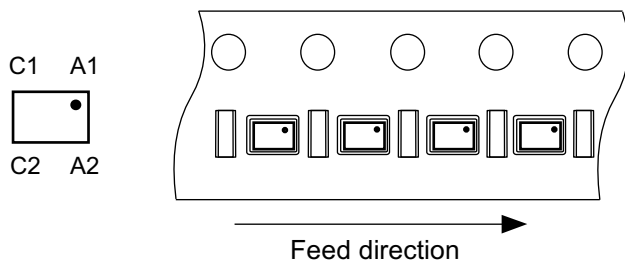
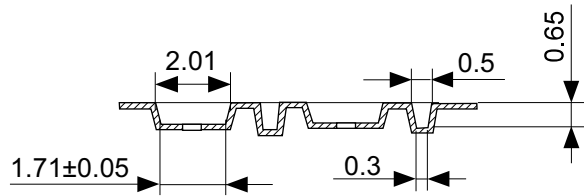
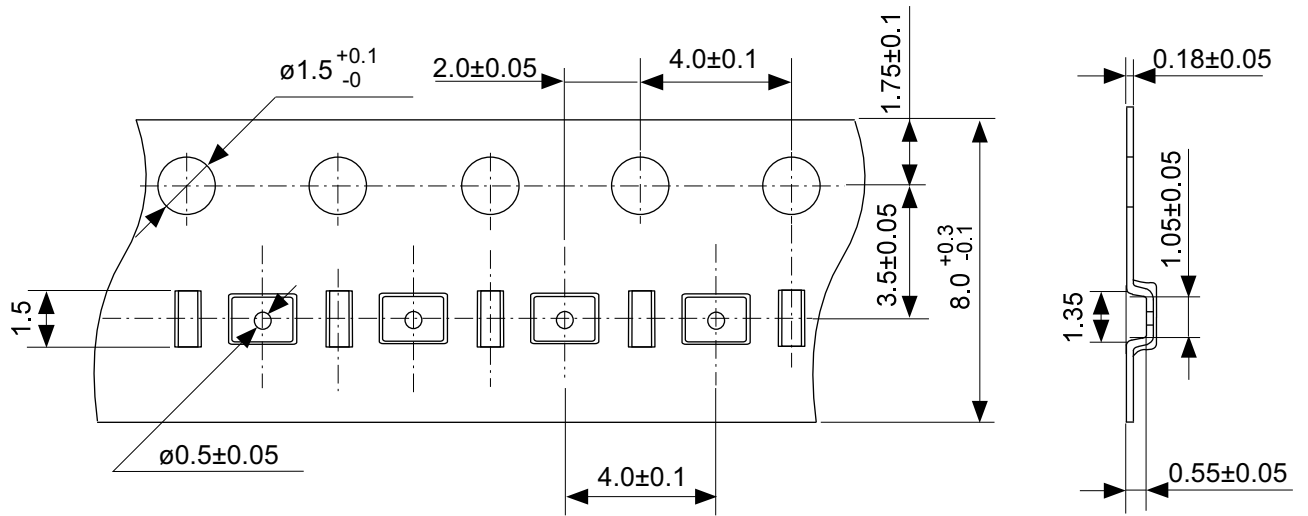


Pin No.	Symbol
A1	SDA
B1	GND
C1	A2
A2	SCL
B2	WP
C2	VCC

No. HJ006-C-P-SD-2.0

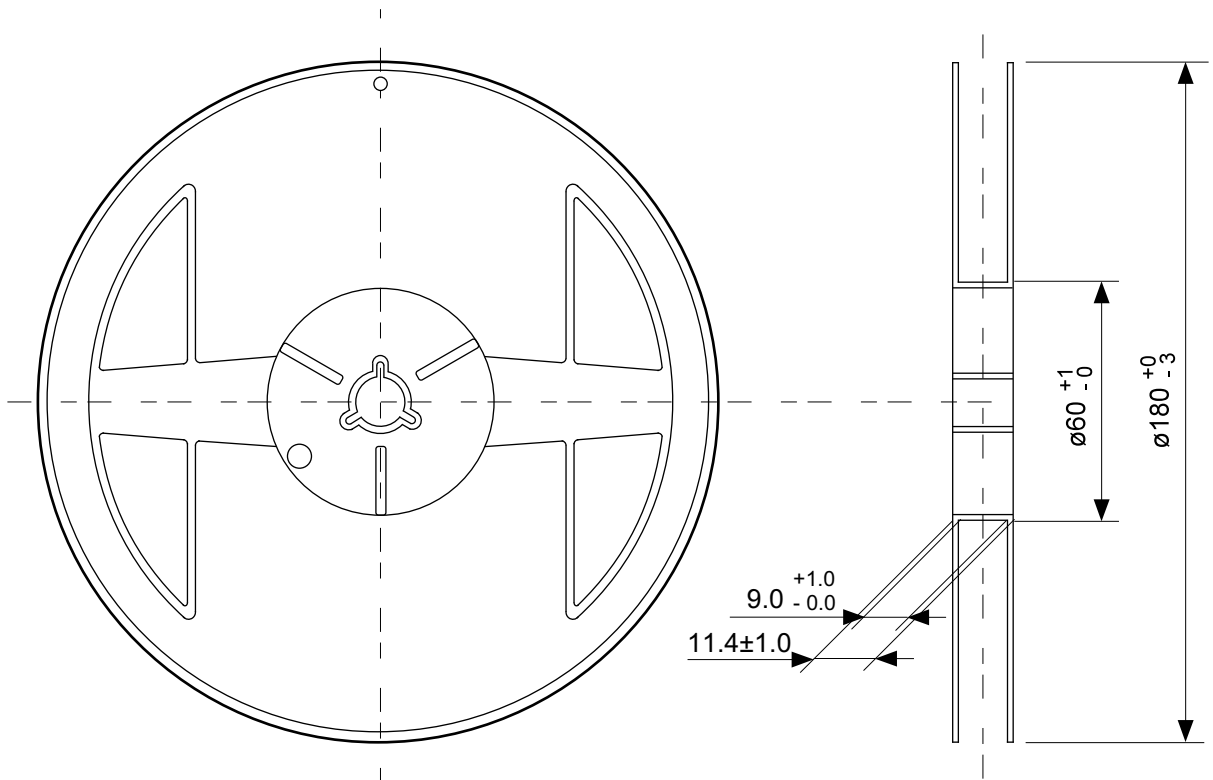
TITLE	WLP-6J-C-PKG Dimensions (S-24C16C)
No.	HJ006-C-P-SD-2.0
ANGLE	
UNIT	mm
ABLIC Inc.	



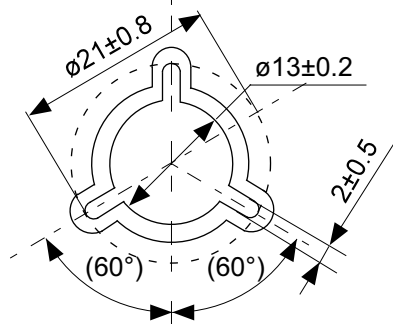
No. HJ006-C-C-SD-1.0

TITLE	WLP-6J-C-Carrier Tape (S-24C16C)
No.	HJ006-C-C-SD-1.0
ANGLE	
UNIT	mm

ABLIC Inc.

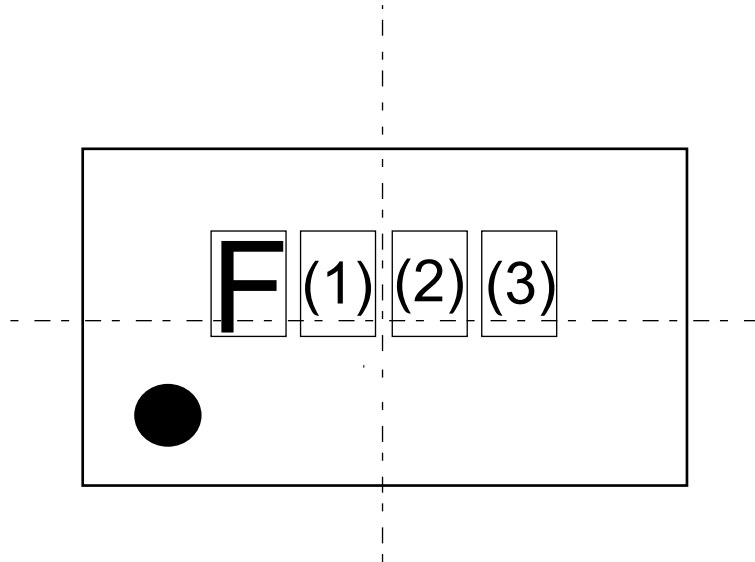


Enlarged drawing in the central part



No. HJ006-C-R-SD-2.0

TITLE	WLP-6J-C-Reel (S-24C16C)		
No.	HJ006-C-R-SD-2.0		
ANGLE		QTY.	3,000
UNIT	mm		
ABLIC Inc.			



(1) : Product code

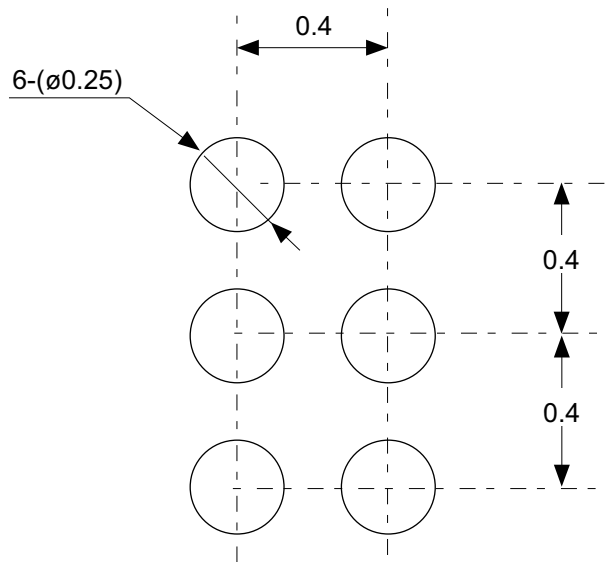
(2) , (3) : Lot code

● : 1 Pin mark

No. HJ006-C-M-SD-1.0

TITLE	WLP-6J-C-Markings (S-24C16C)		
No.	HJ006-C-M-SD-1.0		
ANGLE			
UNIT		TYPE	LASER

ABLIC Inc.



No. HJ006-C-L-SD-1.0

TITLE	WLP-6J-C-Land Recommendation (S-24C16C)
No.	HJ006-C-L-SD-1.0
ANGLE	
UNIT	mm

ABLIC Inc.