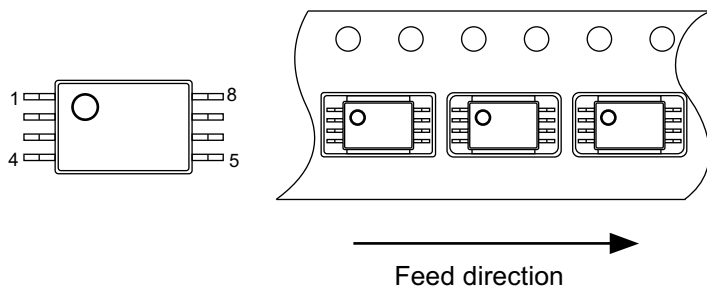
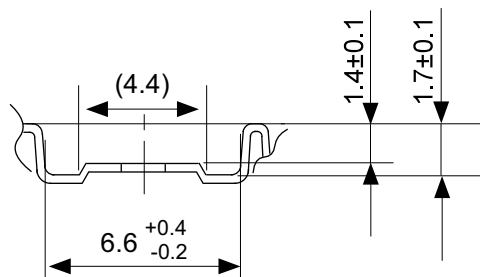
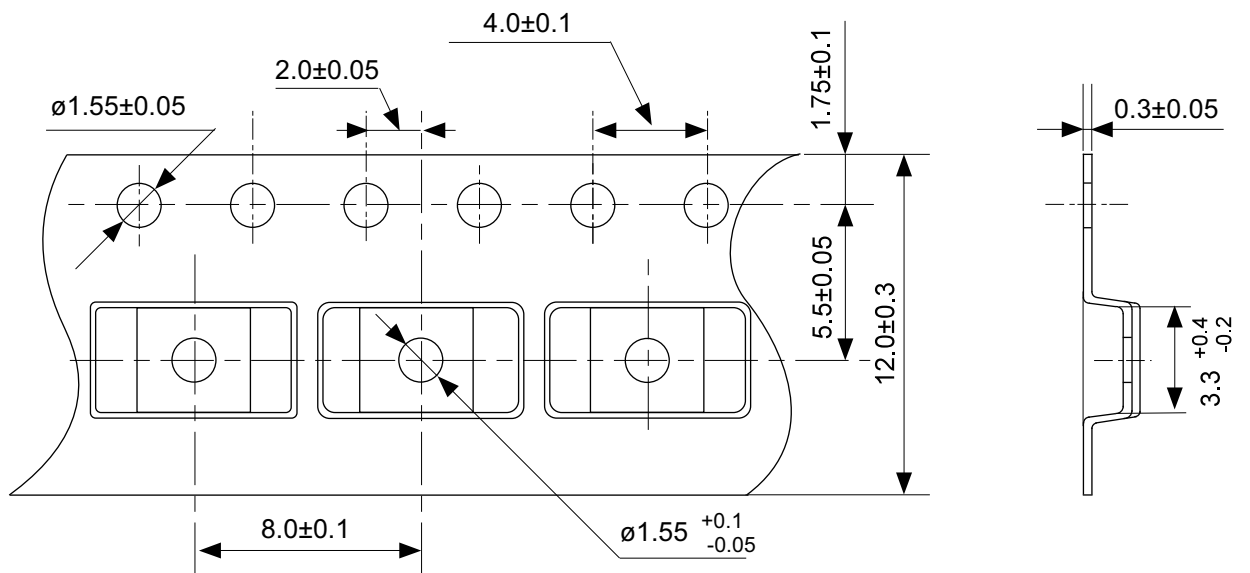


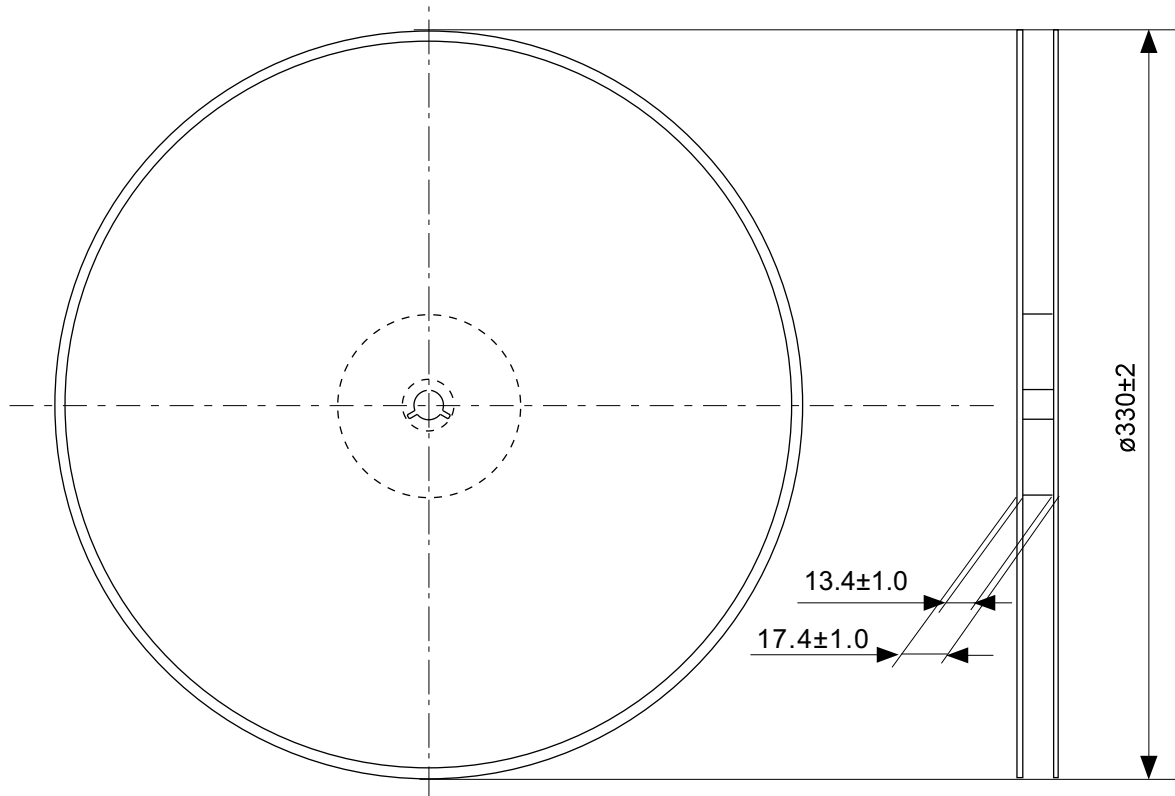
No. FT008-A-P-SD-1.2

TITLE	TSSOP8-E-PKG Dimensions
No.	FT008-A-P-SD-1.2
ANGLE	
UNIT	mm
ABLIC Inc.	

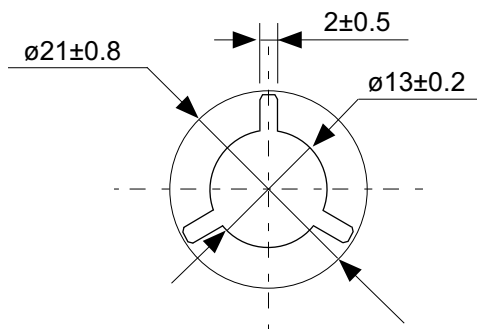


No. FT008-E-C-SD-1.0

TITLE	TSSOP8-E-Carrier Tape
No.	FT008-E-C-SD-1.0
ANGLE	
UNIT	mm
ABLIC Inc.	

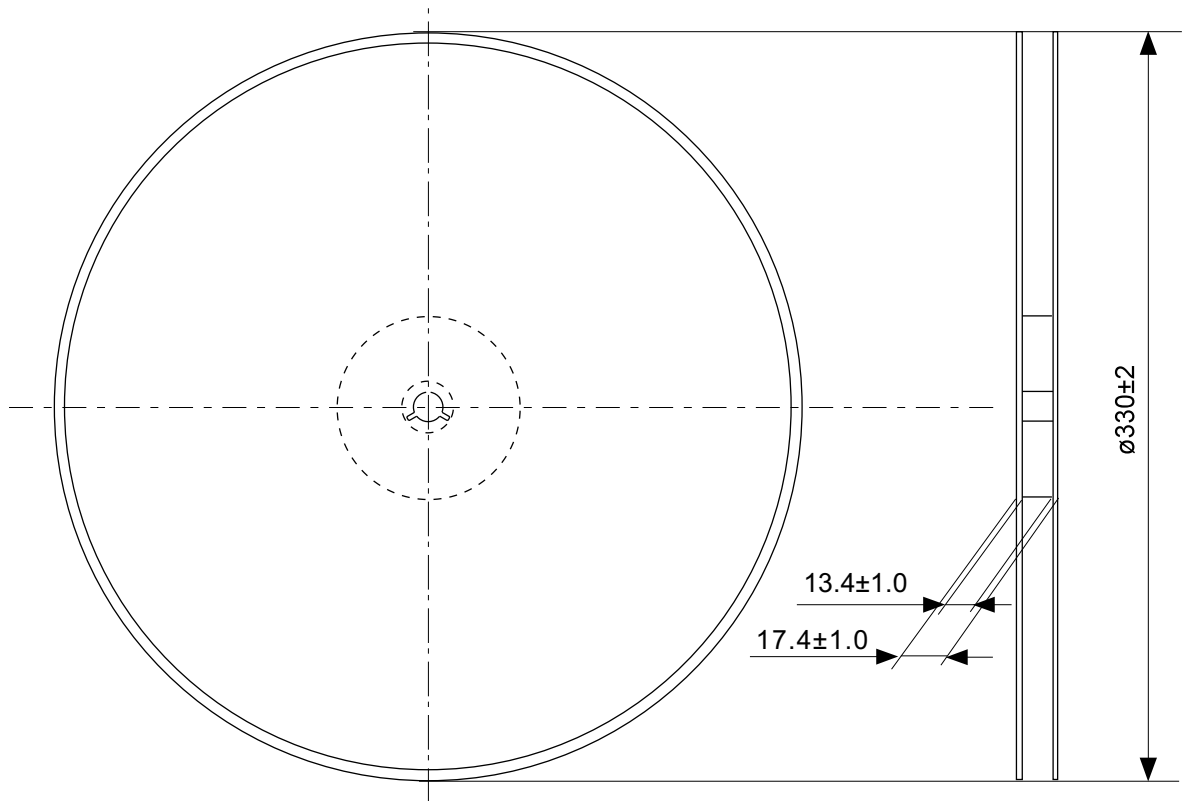


Enlarged drawing in the central part

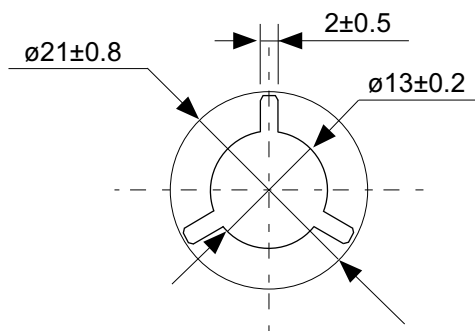


No. FT008-E-R-SD-2.0

TITLE	TSSOP8-E-Reel		
No.	FT008-E-R-SD-2.0		
ANGLE		QTY.	3,000
UNIT	mm		
ABLIC Inc.			

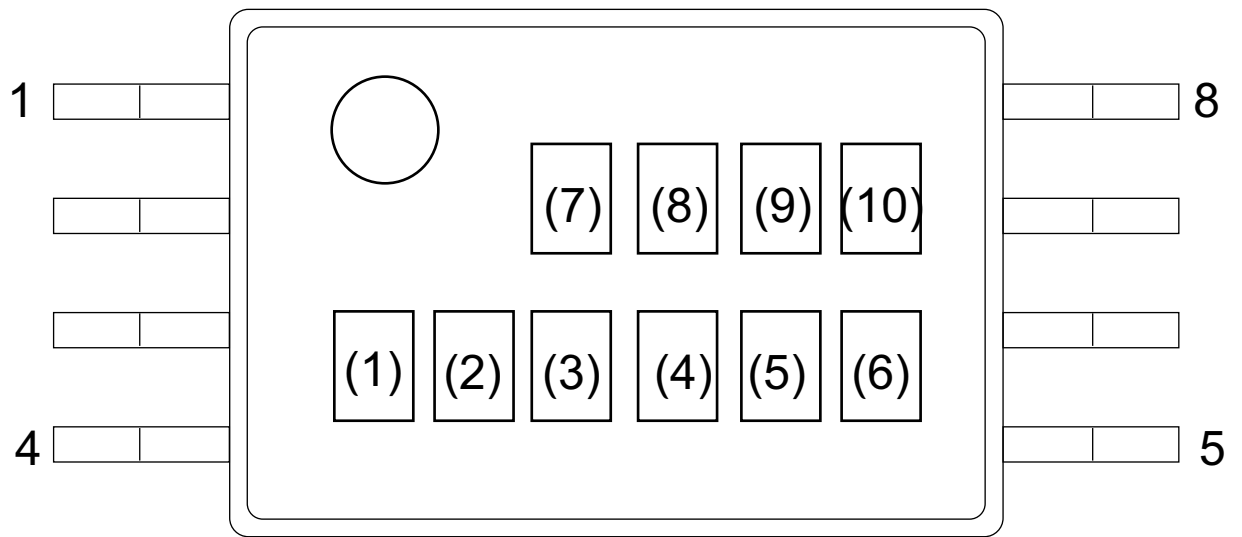


Enlarged drawing in the central part



No. FT008-E-R-S1-2.0

TITLE	TSSOP8-E-Reel		
No.	FT008-E-R-S1-2.0		
ANGLE		QTY.	4,000
UNIT	mm		
ABLIC Inc.			

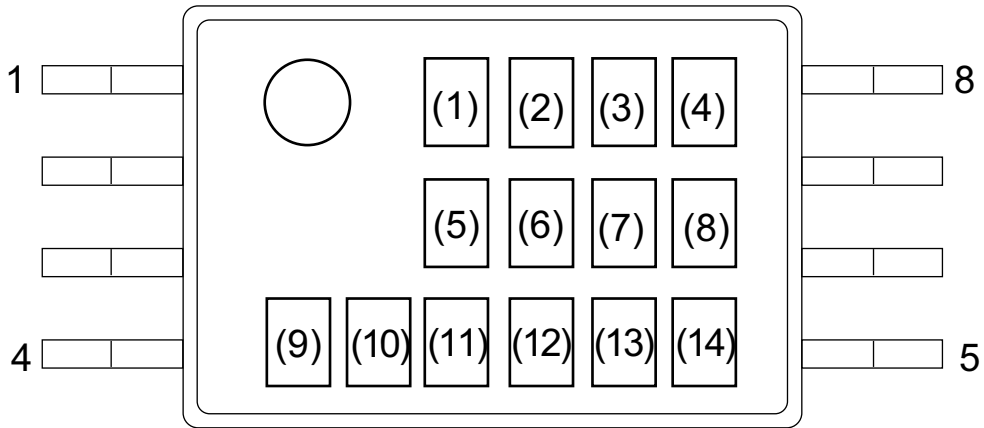


(1) to (6) or (7) : Product code

(7) or (8) to (10) : Lot No. code

No. FT008-A-M-SD-1.3

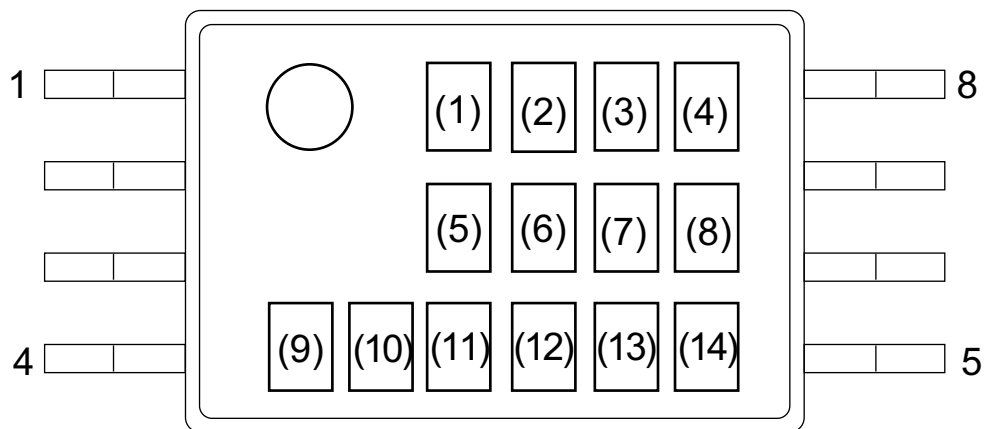
TITLE	TSSOP8-E-Markings		
No.	FT008-A-M-SD-1.3		
ANGLE			
UNIT		TYPE	LASER
ABLIC Inc.			



- (1) to (8) : Product code
- (9) : Assembly code
- (10) : Year of assembly
- (11) : Month of assembly
- (12) to (14) : Lot No.

No. FT008-A-M-S1-4.0

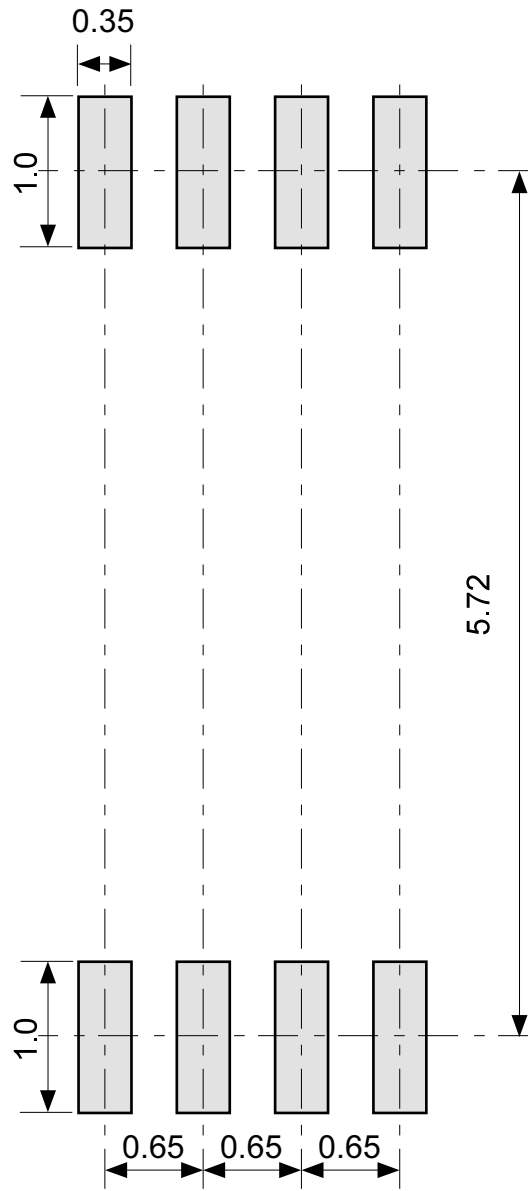
TITLE	TSSOP8-E-Markings		
No.	FT008-A-M-S1-4.0		
ANGLE			
UNIT		TYPE	LASER
ABLIC Inc.			



- (1) to (8) : Product code
- (9) : Assembly code
- (10) : Year of assembly
- (11) to (14) : Lot No.

No. FT008-A-M-S2-1.0

TITLE	TSSOP8-E-Markings		
No.	FT008-A-M-S2-1.0		
ANGLE			
UNIT		TYPE	LASER
ABLIC Inc.			



No. FT008-A-L-SD-1.1

TITLE	TSSOP8-E -Land Recommendation
No.	FT008-A-L-SD-1.1
ANGLE	
UNIT	mm
ABLIC Inc.	